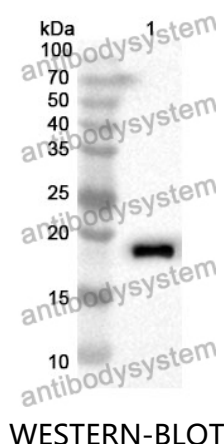


Anti-Mouse TRBC1 Polyclonal Antibody

Summary

Catalog No.	PMK13801
Host species	Rabbit
Tested applications	ELISA: 1:4000-1:8000, IHC: 1:50-1:100, WB: 1:1000-1:4000
Species reactivity	Mouse
Immunogen	E. coli - derived recombinant Mouse TRBC1 (Glu1-Tyr145).
Form	Liquid
Storage buffer	0.01M PBS, pH 7.4, 50% Glycerol, 0.05% Proclin 300.
Clonality	Polyclonal
Isotype	IgG
Applications	ELISA, IHC, WB
Target	T-cell receptor beta-1 chain C region
Purification	Purified by antigen affinity column.
Accession	P01852
Stability and Storage	Use a manual defrost freezer and avoid repeated freeze thaw cycles. Store at 2 to 8°C for frequent use. Store at -20 to -80°C for twelve months from the date of receipt.
Note	For research use only.

Data Image



Recombinant Protein lysates were subjected to SDS PAGE followed by western blot with TRBC1 antibody (PMK13801) at 1 µg/ml.

Lane 1: Recombinant protein

Second Ab: Goat Anti-Rabbit IgG H&L Polyclonal antibody, HRP (PTB96431) at 0.1 µg/mL.

Predict MW: 19 kDa

Observed MW: 19 kDa

Various lysates were subjected to SDS PAGE followed by western blot with TRBC1 antibody (PMK13801) at 1 µg/ml.

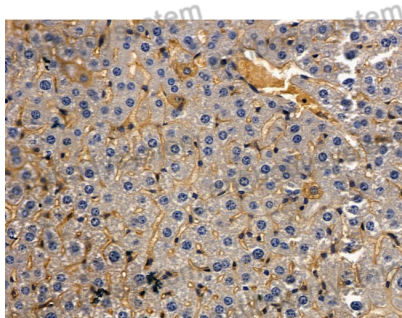
Lane 1: HuvEc

Second Ab: Goat Anti-Rabbit IgG H&L Polyclonal antibody, HRP (PTB96431) at 0.1 µg/mL.

Predict MW: 19 kDa

Observed MW: 19 kDa

Western Blot



Immunohistochemical analysis of mouse liver stained for TRBC1 with PMK13801.

Immunohistochemical