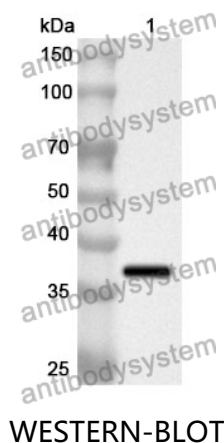


Anti-Human TLE3 Polyclonal Antibody

Summary

Catalog No.	PHG02101
Host species	Rabbit
Tested applications	ELISA: 1:4000-1:8000, IHC: 1:50-1:100, WB: 1:1000-1:4000
Species reactivity	Human
Immunogen	E. coli - derived recombinant Human TLE3 (Ser449-Tyr772).
Form	Liquid
Storage buffer	0.01M PBS, pH 7.4, 50% Glycerol, 0.05% Proclin 300.
Clonality	Polyclonal
Isotype	IgG
Applications	ELISA, IHC, WB
Target	Transducin-like enhancer protein 3, KIAA1547, TLE3, Enhancer of split groucho-like protein 3, ESG3
Purification	Purified by antigen affinity column.
Accession	Q04726
Stability and Storage	Use a manual defrost freezer and avoid repeated freeze thaw cycles. Store at 2 to 8°C for frequent use. Store at -20 to -80°C for twelve months from the date of receipt.
Note	For research use only.

Data Image



Recombinant Protein lysates were subjected to SDS PAGE followed by western blot with TLE3 antibody (PHG02101) at 1 µg/ml.

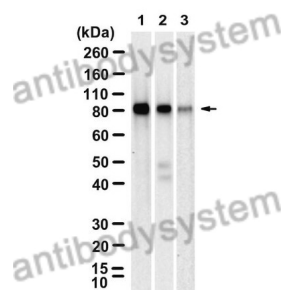
Lane 1: Recombinant protein

Second Ab: Goat Anti-Rabbit IgG H&L Polyclonal antibody, HRP (PTB96431) at 0.1 µg/mL.

Predict MW: 38 kDa

Observed MW: 38 kDa

Various lysates were subjected to SDS PAGE followed by western blot with TLE3 antibody (PHG02101) at 1 µg/ml.



Lane 1: Hela

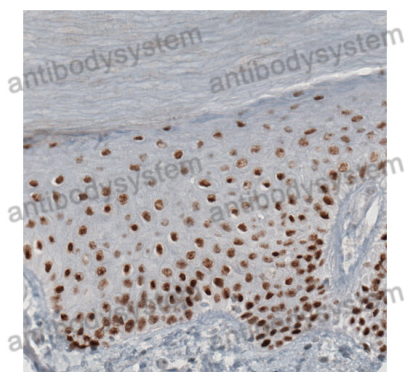
Lane 2: HEK293

Lane 3: NIH3T3

Second Ab: Goat Anti-Rabbit IgG H&L Polyclonal antibody, HRP (PTB96431) at 0.1 µg/mL.

Predict MW: 83 kDa

Observed MW: 83 kDa



Immunohistochemical analysis of human oral mucosa stained for TLE3 with PHG02101.