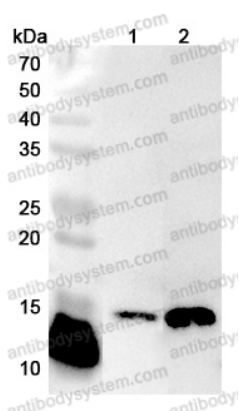


Anti-Human SSBP1 Polyclonal Antibody

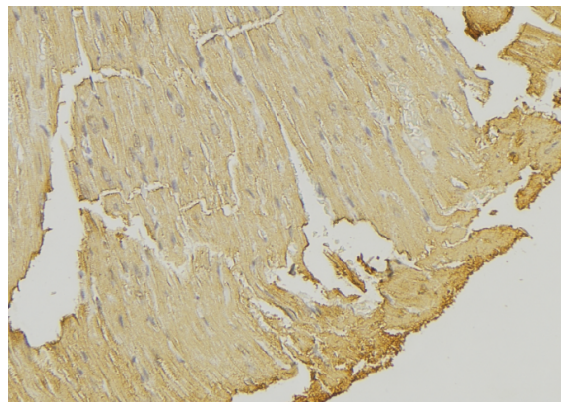
Summary

Catalog No.	PHG03001
Host species	Rabbit
Tested applications	ELISA: 1:4000-1:8000, IHC: 1:50-1:100, WB: 1:1000-1:4000
Species reactivity	Human
Immunogen	E. coli - derived recombinant Human SSBP1 (His16-Glu148).
Form	Liquid
Storage buffer	0.01M PBS, pH 7.4, 50% Glycerol, 0.05% Proclin 300.
Clonality	Polyclonal
Isotype	IgG
Applications	ELISA, IHC, WB
Target	Single-stranded DNA-binding protein, mitochondrial, Mt-SSB, MtSSB, PWP1-interacting protein 17, SSBP1, SSBP
Purification	Purified by antigen affinity column.
Accession	Q04837
Stability and Storage	Use a manual defrost freezer and avoid repeated freeze thaw cycles. Store at 2 to 8°C for frequent use. Store at -20 to -80°C for twelve months from the date of receipt.
Note	For research use only.

Data Image



Western Blot



Immunohistochemical



Western Blot

Various lysates were subjected to SDS PAGE followed by western blot with SSBP1 antibody (PHG03001) at 1 μ g/ml.

Lane 1: A549 cell lysate

Lane 2: SW620 cell lysate

Second Ab: Goat Anti-Rabbit IgG H&L Polyclonal antibody, HRP (PTB96431) at 0.1 μ g/mL.

Predict MW: 17 kDa

Observed MW: 15 kDa

Immunohistochemical analysis of mouse muscle stained for SSBP1 with PHG03001.

Recombinant Protein lysates were subjected to SDS PAGE followed by western blot with SSBP1 antibody (PHG03001) at 1 μ g/ml.

Lane 1: Recombinant Protein

Second Ab: Goat Anti-Rabbit IgG H&L Polyclonal antibody, HRP (PTB96431) at 0.1 μ g/mL.

Predict MW: 18 kDa

Observed MW: 18 kDa