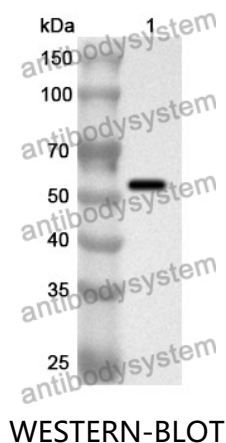


Anti-Human PPAT Polyclonal Antibody

Summary

Catalog No.	PHG08001
Host species	Rabbit
Tested applications	ELISA: 1:4000-1:8000, IHC: 1:50-1:100, WB: 1:1000-1:4000
Species reactivity	Human
Immunogen	E. coli - derived recombinant Human PPAT (Glu11-Lys474).
Form	Liquid
Storage buffer	0.01M PBS, pH 7.4, 50% Glycerol, 0.05% Proclin 300.
Clonality	Polyclonal
Isotype	IgG
Applications	ELISA, IHC, WB
Target	ATase, Amidophosphoribosyltransferase, PPAT, GPAT, Glutamine phosphoribosylpyrophosphate amidotransferase
Purification	Purified by antigen affinity column.
Accession	Q06203
Stability and Storage	Use a manual defrost freezer and avoid repeated freeze thaw cycles. Store at 2 to 8°C for frequent use. Store at -20 to -80°C for twelve months from the date of receipt.
Note	For research use only.

Data Image



Recombinant Protein lysates were subjected to SDS PAGE followed by western blot with PPAT antibody (PHG08001) at 1 µg/ml.

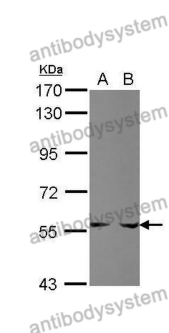
Lane 1: Recombinant protein

Second Ab: Goat Anti-Rabbit IgG H&L Polyclonal antibody, HRP (PTB96431) at 0.1 µg/mL.

Predict MW: 54 kDa

Observed MW: 54 kDa

Various lysates were subjected to SDS PAGE followed by western blot with PPAT antibody (PHG08001) at 1 µg/ml.



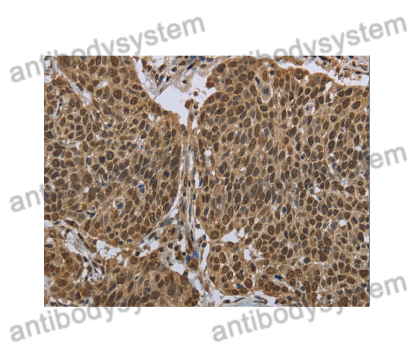
Lane 1: HepG2

Lane 2: HCT116

Second Ab: Goat Anti-Rabbit IgG H&L Polyclonal antibody, HRP (PTB96431) at 0.1 µg/mL.

Predict MW: 57 kDa

Observed MW: 57 kDa



Immunohistochemical

Immunohistochemical analysis of Human cervical cancer tissue stained for PPAT with PHG08001.