

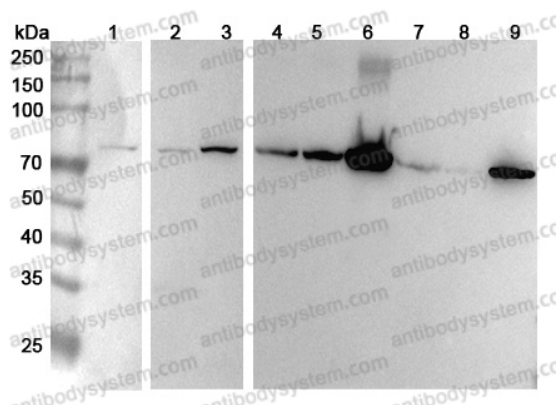
Anti-Human HADHA Polyclonal Antibody

Summary

Catalog No.	PHE28601
Host species	Rabbit
Tested applications	ELISA: 1:4000-1:8000, IHC: 1:50-1:100, WB: 1:1000-1:4000
Species reactivity	Human
Immunogen	E. coli - derived recombinant Human HADHA (Gly31-Gln763).
Form	Liquid
Storage buffer	0.01M PBS, pH 7.4, 50% Glycerol, 0.05% Proclin 300.
Clonality	Polyclonal
Isotype	IgG
Applications	ELISA, IHC, WB
Target	78 kDa gastrin-binding protein, HADH, HADHA, Trifunctional enzyme subunit alpha, mitochondrial, TP-alpha, Monolysocardiolipin acyltransferase
Purification	Purified by antigen affinity column.
Accession	P40939
Stability and Storage	Use a manual defrost freezer and avoid repeated freeze thaw cycles. Store at 2 to 8°C for frequent use. Store at -20 to -80°C for twelve months from the date of receipt.
Note	For research use only.

Data Image

Various lysates were subjected to SDS PAGE followed by western blot with HADHA antibody (PHE28601) at 1 μ g/ml.



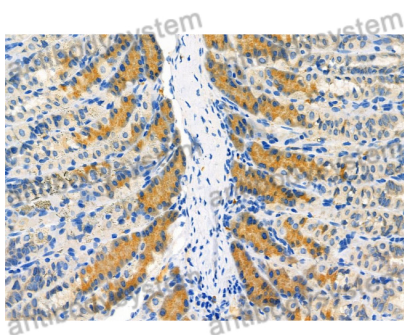
Western Blot

Lane 1: THP-1 cell lysate
Lane 2: HepG2 cell lysate
Lane 3: MCF7 cell lysate
Lane 4: Mouse liver lysate
Lane 5: Mouse kidney lysate
Lane 6: Mouse heart lysate
Lane 7: Rat liver lysate
Lane 8: Rat kidney lysate
Lane 9: Rat heart lysate

Second Ab: Goat Anti-Rabbit IgG H&L Polyclonal antibody, HRP (PTB96431) at 0.1 μ g/mL.

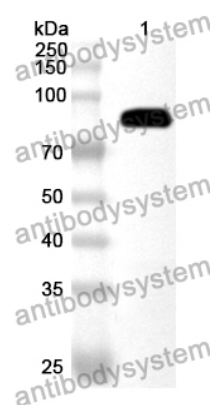
Predict MW: 83 kDa

Observed MW: 75 kDa



Immunohistochemical

Immunohistochemical analysis of mouse stomach stained for HADHA with PHE28601.



Western Blot

Recombinant Protein lysates were subjected to SDS PAGE followed by western blot with HADHA antibody (PHE28601) at 1 μ g/ml.

Lane 1: Recombinant Protein

Second Ab: Goat Anti-Rabbit IgG H&L Polyclonal antibody, HRP (PTB96431) at 0.1 μ g/mL.

Predict MW: 82 kDa

Observed MW: 82 kDa