

# Anti-Human CUL4A Polyclonal Antibody

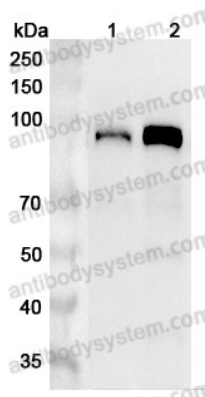
## Summary

---

<b>Catalog No.</b>	PHG61501
<b>Host species</b>	Rabbit
<b>Tested applications</b>	ELISA: 1:4000-1:8000, IHC: 1:50-1:100, WB: 1:1000-1:4000
<b>Species reactivity</b>	Human
<b>Immunogen</b>	E. coli - derived recombinant Human CUL4A (Arg666-Ala759).
<b>Form</b>	Liquid
<b>Storage buffer</b>	0.01M PBS, pH 7.4, 50% Glycerol, 0.05% Proclin 300.
<b>Clonality</b>	Polyclonal
<b>Isotype</b>	IgG
<b>Applications</b>	ELISA, IHC, WB
<b>Target</b>	CUL-4A, CUL4A, Cullin-4A
<b>Purification</b>	Purified by antigen affinity column.
<b>Accession</b>	Q13619
<b>Stability and Storage</b>	Use a manual defrost freezer and avoid repeated freeze thaw cycles. Store at 2 to 8°C for frequent use. Store at -20 to -80°C for twelve months from the date of receipt.
<b>Note</b>	For research use only.

## Data Image

---



Western Blot

Various lysates were subjected to SDS PAGE followed by western blot with CUL4A antibody (PHG61501) at 1 µg/ml.

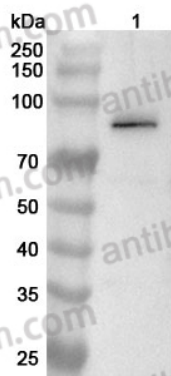
Lane 1: PC-12 cell lysate

Lane 2: Raji cell lysate

Second Ab: Goat Anti-Rabbit IgG H&L Polyclonal antibody, HRP (PTB96431) at 0.1 µg/mL.

Predict MW: 88 kDa

Observed MW: 88 kDa



Western Blot

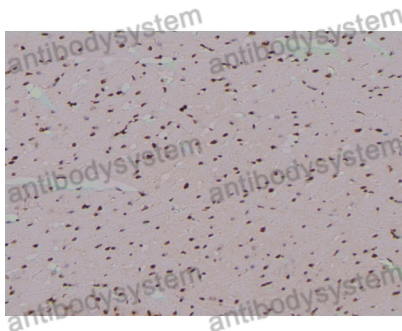
Various lysates were subjected to SDS PAGE followed by western blot with CUL4A antibody (PHG61501) at 1 µg/ml.

Lane 1: NIH3T3 cell lysate

Second Ab: Goat Anti-Rabbit IgG H&L Polyclonal antibody, HRP (PTB96431) at 0.1 µg/mL.

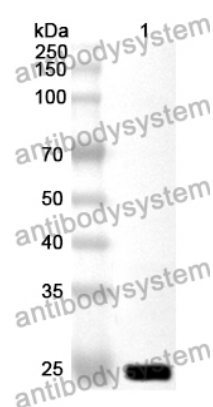
Predict MW: 88 kDa

Observed MW: 88 kDa



Immunohistochemical

Immunohistochemical analysis of rat heart stained for CUL4A with PHG61501.



Western Blot

Recombinant Protein lysates were subjected to SDS PAGE followed by western blot with CUL4A antibody (PHG61501) at 1 µg/ml.

Lane 1: Recombinant Protein

Second Ab: Goat Anti-Rabbit IgG H&L Polyclonal antibody, HRP (PTB96431) at 0.1 µg/mL.

Predict MW: 25 kDa

Observed MW: 25 kDa