

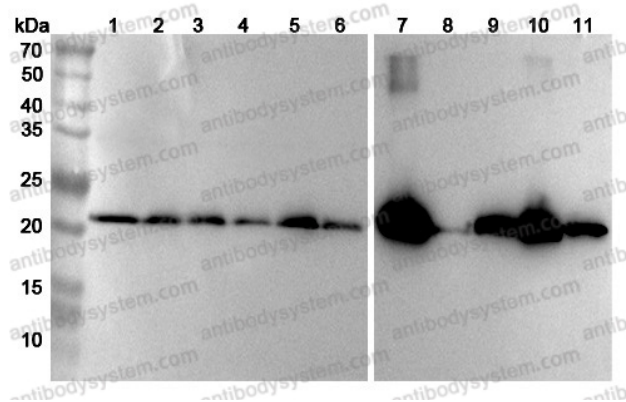
Anti-Human UQCRFS1 Polyclonal Antibody

Summary

Catalog No.	PHE54001
Host species	Rabbit
Tested applications	ELISA: 1:4000-1:8000, IHC: 1:50-1:100, WB: 1:1000-1:4000
Species reactivity	Human
Immunogen	E. coli - derived recombinant Human UQCRFS1 (Arg104-Gly274).
Form	Liquid
Storage buffer	0.01M PBS, pH 7.4, 50% Glycerol, 0.05% Proclin 300.
Clonality	Polyclonal
Isotype	IgG
Applications	ELISA, IHC, WB
Target	Rieske iron-sulfur protein, UQCRFS1 mitochondrial targeting sequence, UQCRFS1, Ubiquinol-cytochrome c reductase 8 kDa protein, Cytochrome b-c1 complex subunit 11, Subunit 9, Su9, RISP, Rieske protein UQCRFS1, Cytochrome b-c1 complex subunit 5, Complex III subunit 5, 8 kDa subunit 9, Ubiquinol-cytochrome c reductase iron-sulfur subunit, UQCRFS1 MTS, Complex III subunit IX, Cytochrome b-c1 complex subunit Rieske, mitochondrial
Purification	Purified by antigen affinity column.
Accession	P47985
Stability and Storage	Use a manual defrost freezer and avoid repeated freeze thaw cycles. Store at 2 to 8°C for frequent use. Store at -20 to -80°C for twelve months from the date of receipt.

Note

For research use only.

Data Image

Western Blot

Various lysates were subjected to SDS PAGE followed by western blot with UQCRCF1 antibody (PHE54001) at 1µg/ml.

Lane 1: MCF7 cell lysate

Lane 2: A2780s cell lysate

Lane 3: Raji cell lysate

Lane 4: A549 cell lysate

Lane 5: MCF7 cell lysate

Lane 6: 293T cell lysate

Lane 7: Mouse heart lysate

Lane 8: Mouse skeletal muscle lysate

Lane 9: Rat brain lysate

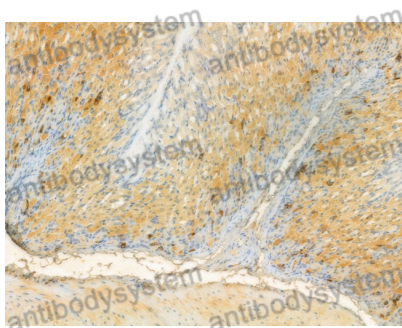
Lane 10: Rat heart lysate

Lane 11: Rat skeletal muscle lysate

Second Ab: Goat Anti-Rabbit IgG H&L Polyclonal antibody, HRP (PTB96431) at 0.1 µg/mL.

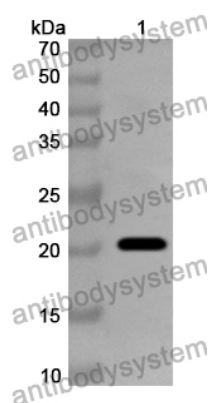
Predict MW: 30 kDa

Observed MW: 23 kDa



Immunohistochemical analysis of mouse stomach stained for UQCRFS1 with PHE54001.

Immunohistochemical



Western Blot

Recombinant Protein lysates were subjected to SDS PAGE followed by western blot with UQCRFS1 antibody (PHE54001) at 1 μ g/ml.

Lane 1: Recombinant Protein

Second Ab: Goat Anti-Rabbit IgG H&L Polyclonal antibody, HRP (PTB96431) at 0.1 μ g/mL.

Predict MW: 21 kDa

Observed MW: 21 kDa