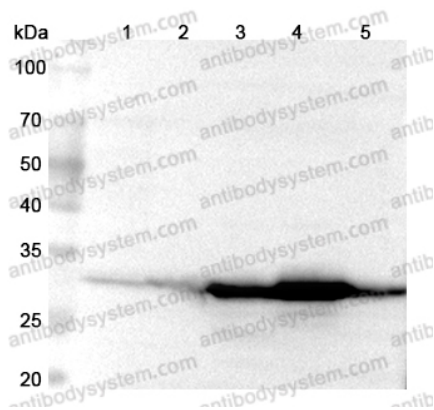


Anti-Human SULT1E1 Polyclonal Antibody

Summary

Catalog No.	PHE72601
Host species	Rabbit
Tested applications	ELISA: 1:4000-1:8000, IHC: 1:50-1:100, WB: 1:1000-1:4000
Species reactivity	Human
Immunogen	E. coli - derived recombinant Human SULT1E1 (Met1-Ile294).
Form	Liquid
Storage buffer	0.01M PBS, pH 7.4, 50% Glycerol, 0.05% Proclin 300.
Clonality	Polyclonal
Isotype	IgG
Applications	ELISA, IHC, WB
Target	ST1E1, STE, EST-1, SULT1E1, Sulfotransferase 1E1, Sulfotransferase, estrogen-preferring, Estrogen sulfotransferase
Purification	Purified by antigen affinity column.
Accession	P49888
Stability and Storage	Use a manual defrost freezer and avoid repeated freeze thaw cycles. Store at 2 to 8°C for frequent use. Store at -20 to -80°C for twelve months from the date of receipt.
Note	For research use only.

Data Image



Western Blot

Various lysates were subjected to SDS PAGE followed by western blot with SULT1E1 antibody (PHE72601) at 1 μ g/ml.

Lane 1: HepG2 cell lysate

Lane 2: Mouse brain lysate

Lane 3: Mouse liver lysate

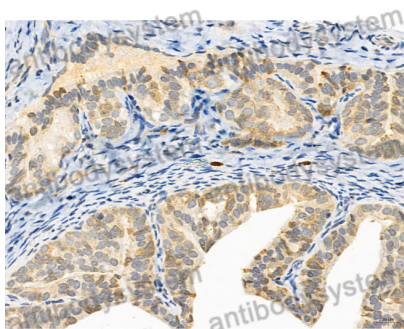
Lane 4: Mouse kidney lysate

Lane 5: Mouse small intestine lysate

Second Ab: Goat Anti-Rabbit IgG H&L Polyclonal antibody, HRP (PTB96431) at 0.1 μ g/mL.

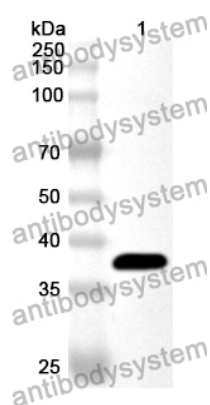
Predict MW: 35 kDa

Observed MW: 32 kDa



Immunohistochemical

Immunohistochemical analysis of rat ovary stained for SULT1E1 with PHE72601.



Western Blot

Recombinant Protein lysates were subjected to SDS PAGE followed by western blot with SULT1E1 antibody (PHE72601) at 1 µg/ml.

Lane 1: Recombinant Protein

Second Ab: Goat Anti-Rabbit IgG H&L Polyclonal antibody, HRP (PTB96431) at 0.1 µg/mL.

Predict MW: 37 kDa

Observed MW: 37 kDa