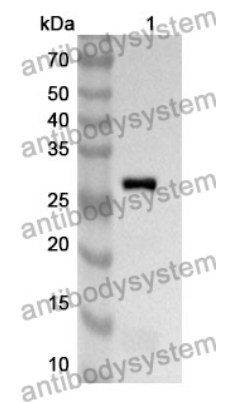


Anti-Human SKAP2 Polyclonal Antibody

Summary

Catalog No.	PHB24701
Host species	Rabbit
Tested applications	ELISA: 1:4000-1:8000, IHC: 1:50-1:100, WB: 1:1000-1:4000
Species reactivity	Human
Immunogen	E. coli - derived recombinant Human SKAP2 (Ala111-Glu222).
Form	Liquid
Storage buffer	0.01M PBS, pH 7.4, 50% Glycerol, 0.05% Proclin 300.
Clonality	Polyclonal
Isotype	IgG
Applications	ELISA, IHC, WB
Target	Src family-associated phosphoprotein 2, SKAP-HOM, Src-associated adapter protein with PH and SH3 domains, PRAP, SKAP55 homolog, Src kinase-associated phosphoprotein 55-related protein, RA70, SKAP55R, SKAP2, Retinoic acid-induced protein 70, Pyk2/RAFTK-associated protein, SAPS, Src kinase-associated phosphoprotein 2, SCAP2, SKAP-55HOM
Purification	Purified by antigen affinity column.
Accession	O75563
Stability and Storage	Use a manual defrost freezer and avoid repeated freeze thaw cycles. Store at 2 to 8°C for frequent use. Store at -20 to -80°C for twelve months from the date of receipt.
Note	For research use only.

Data Image



Recombinant Protein lysates were subjected to SDS PAGE followed by western blot with SKAP2 antibody (PHB24701) at 1 μ g/ml.

Lane 1: Recombinant protein

Second Ab: Goat Anti-Rabbit IgG H&L Polyclonal antibody, HRP (PTB96431) at 0.1 μ g/mL.

Predict MW: 27 kDa

Observed MW: 27 kDa