

# Anti-Human SDHB Polyclonal Antibody

## Summary

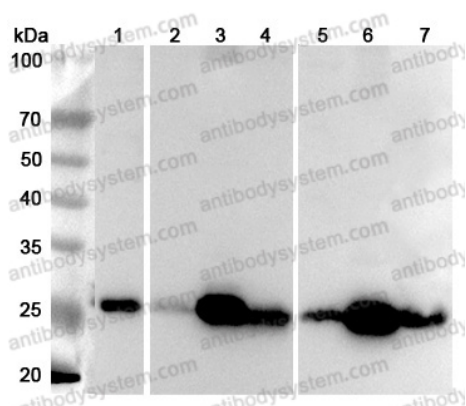
---

<b>Catalog No.</b>	PHD48501
<b>Host species</b>	Rabbit
<b>Tested applications</b>	ELISA: 1:4000-1:8000, IHC: 1:50-1:100, WB: 1:1000-1:4000
<b>Species reactivity</b>	Human
<b>Immunogen</b>	E. coli - derived recombinant Human SDHB (Arg38-Val280).
<b>Form</b>	Liquid
<b>Storage buffer</b>	0.01M PBS, pH 7.4, 50% Glycerol, 0.05% Proclin 300.
<b>Clonality</b>	Polyclonal
<b>Isotype</b>	IgG
<b>Applications</b>	ELISA, IHC, WB
<b>Target</b>	Ip, SDH1, SDHB, Iron-sulfur subunit of complex II, Succinate dehydrogenase [ubiquinone] iron-sulfur subunit, mitochondrial, SDH
<b>Purification</b>	Purified by antigen affinity column.
<b>Accession</b>	P21912
<b>Stability and Storage</b>	Use a manual defrost freezer and avoid repeated freeze thaw cycles. Store at 2 to 8°C for frequent use. Store at -20 to -80°C for twelve months from the date of receipt.
<b>Note</b>	For research use only.

## Data Image

---

Various lysates were subjected to SDS PAGE followed by western blot with SDHB antibody (PHD48501) at 1µg/ml.



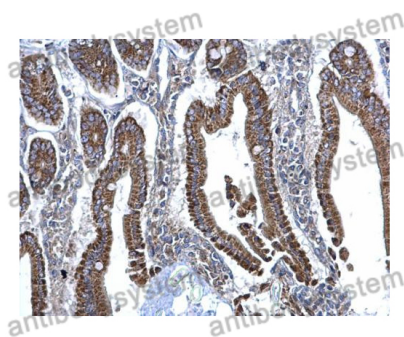
Western Blot

Lane 1: K562 cell lysate  
Lane 2: Mouse brain lysate  
Lane 3: Mouse heart lysate  
Lane 4: Mouse liver lysate  
Lane 5: Rat brain lysate  
Lane 6: Rat heart lysate  
Lane 7: Rat liver lysate

Second Ab: Goat Anti-Rabbit IgG H&L Polyclonal antibody, HRP (PTB96431) at 0.1 µg/mL.

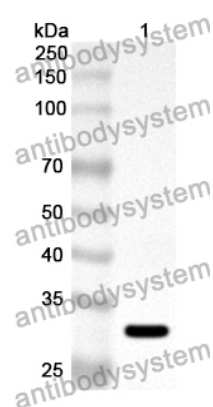
Predict MW: 32 kDa

Observed MW: 32 kDa



Immunohistochemical

Immunohistochemical analysis of mouse intestine tissue stained for SDHB with PHD48501.



Western Blot

Recombinant Protein lysates were subjected to SDS PAGE followed by western blot with SDHB antibody (PHD48501) at 1  $\mu$ g/ml.

Lane 1: Recombinant Protein

Second Ab: Goat Anti-Rabbit IgG H&L Polyclonal antibody, HRP (PTB96431) at 0.1  $\mu$ g/mL.

Predict MW: 30 kDa

Observed MW: 30 kDa