

# Anti-Human MED15 Polyclonal Antibody

## Summary

---

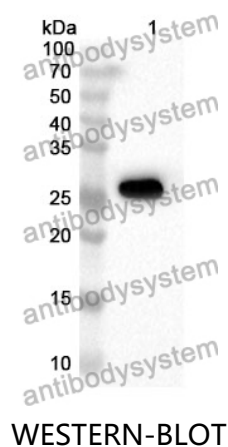
|                              |   |
|------------------------------|---|
| <b>Catalog No.</b>           | PHK38901  |
| <b>Host species</b>          | Rabbit  |
| <b>Tested applications</b>   | ELISA: 1:4000-1:8000, IHC: 1:50-1:100, WB: 1:1000-1:4000  |
| <b>Species reactivity</b>    | Human   |
| <b>Immunogen</b>             | E. coli - derived recombinant Human MED15 (Ser676-Ala788).  |
| <b>Form</b>                  | Liquid  |
| <b>Storage buffer</b>        | 0.01M PBS, pH 7.4, 50% Glycerol, 0.05% Proclin 300.   |
| <b>Clonality</b>             | Polyclonal  |
| <b>Isotype</b>               | IgG   |
| <b>Applications</b>          | ELISA, IHC, WB  |
| <b>Target</b>                | MED15, Activator-recruited cofactor 105 kDa component, TPA-inducible gene 1 protein, ARC105, TIG1, Mediator complex subunit 15, TIG-1, Positive cofactor 2 glutamine/Q-rich-associated protein, PC2 glutamine/Q-rich-associated protein, Mediator of RNA polymerase II transcription subunit 15, PCQAP, TNRC7, Trinucleotide repeat-containing gene 7 protein, CTG7A, CTG repeat protein 7a |
| <b>Purification</b>          | Purified by antigen affinity column.  |
| <b>Accession</b>             | Q96RN5  |
| <b>Stability and Storage</b> | Use a manual defrost freezer and avoid repeated freeze thaw cycles. Store at 2 to 8°C for frequent use. Store at -20 to -80°C for twelve months from the date of receipt.   |

**Note**

For research use only.

## Data Image

---



Recombinant Protein lysates were subjected to SDS PAGE followed by western blot with MED15 antibody (PHK38901) at 1 µg/ml.

Lane 1: Recombinant protein

Second Ab: Goat Anti-Rabbit IgG H&L Polyclonal antibody, HRP (PTB96431) at 0.1 µg/mL.

Predict MW: 26 kDa

Observed MW: 26 kDa