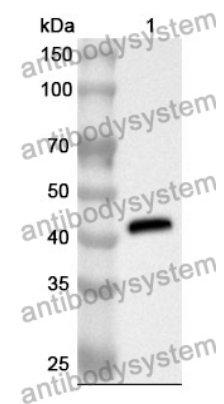


Anti-Human GFPT1 Polyclonal Antibody

Summary

Catalog No.	PHG08101
Host species	Rabbit
Tested applications	ELISA: 1:4000-1:8000, IHC: 1:50-1:100, WB: 1:1000-1:4000
Species reactivity	Human
Immunogen	E. coli - derived recombinant Human GFPT1 (Ser341-Gly683).
Form	Liquid
Storage buffer	0.01M PBS, pH 7.4, 50% Glycerol, 0.05% Proclin 300.
Clonality	Polyclonal
Isotype	IgG
Applications	ELISA, IHC, WB
Target	Glutamine:fructose-6-phosphate amidotransferase 1, GFAT 1, Hexosephosphate aminotransferase 1, D-fructose-6-phosphate amidotransferase 1, GFPT1, GFPT, GFAT, Glutamine--fructose-6-phosphate aminotransferase [isomerizing] 1, GFAT1
Purification	Purified by antigen affinity column.
Accession	Q06210
Stability and Storage	Use a manual defrost freezer and avoid repeated freeze thaw cycles. Store at 2 to 8°C for frequent use. Store at -20 to -80°C for twelve months from the date of receipt.
Note	For research use only.

Data Image



WESTERN-BLOT

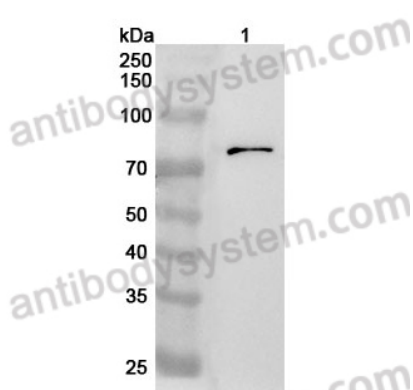
Recombinant Protein lysates were subjected to SDS PAGE followed by western blot with GFPT1 antibody (PHG08101) at 1 μ g/ml.

Lane 1: Recombinant protein

Second Ab: Goat Anti-Rabbit IgG H&L Polyclonal antibody, HRP (PTB96431) at 0.1 μ g/mL.

Predict MW: 41 kDa

Observed MW: 41 kDa



Western Blot

Various lysates were subjected to SDS PAGE followed by western blot with GFPT1 antibody (PHG08101) at 1 μ g/ml.

Lane 1: Jurkat cell lysate

Second Ab: Goat Anti-Rabbit IgG H&L Polyclonal antibody, HRP (PTB96431) at 0.1 μ g/mL.

Predict MW: 78 kDa

Observed MW: 78 kDa