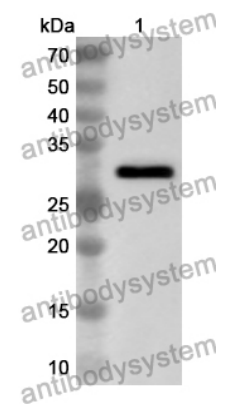


Anti-MMP14 Polyclonal Antibody

Summary

Catalog No.	PHE75502
Host species	Rabbit
Tested applications	ELISA: 1:4000-1:8000, IHC: 1:50-1:200, WB: 1:1000-1:4000
Species reactivity	Human, Mouse, Rat
Immunogen	E. coli - derived recombinant Human MMP14 (Ala21-Ser287).
Form	Liquid
Storage buffer	0.01M PBS, pH 7.4, 50% Glycerol, 0.05% Proclin 300.
Concentration	1.48 mg/ml
Clonality	Polyclonal
Isotype	IgG
Applications	ELISA, IHC, WB
Target	MT-MMP 1, Matrix metalloproteinase-14, Membrane-type matrix metalloproteinase 1, Membrane-type-1 matrix metalloproteinase, MMP14, MTMMP1, MT1-MMP, MMP-14, MMP-X1, MT1MMP
Purification	Purified by antigen affinity column.
Accession	P50281
Stability and Storage	Use a manual defrost freezer and avoid repeated freeze thaw cycles. Store at 2 to 8°C for frequent use. Store at -20 to -80°C for twelve months from the date of receipt.
Note	For research use only.

Data Image



WESTERN-BLOT

Recombinant Protein lysates were subjected to SDS PAGE followed by western blot with MMP14 antibody (PHE75502) at 1 µg/ml.

Lane 1: Recombinant protein

Second Ab: Goat Anti-Rabbit IgG H&L Polyclonal antibody, HRP (PTB96431) at 0.1 µg/mL.

Predict MW: 31 kDa

Observed MW: 31 kDa