

Anti-Human IFIT2 Polyclonal Antibody

Summary

Catalog No.	PHC44001
Host species	Rabbit
Tested applications	ELISA: 1:4000-1:8000, IHC: 1:50-1:100, WB: 1:1000-1:4000
Species reactivity	Human
Immunogen	E. coli - derived recombinant Human IFIT2 (Met1-Glu472).
Form	Liquid
Storage buffer	0.01M PBS, pH 7.4, 50% Glycerol, 0.05% Proclin 300.
Clonality	Polyclonal
Isotype	IgG
Applications	ELISA, IHC, WB
Target	P54, Interferon-induced 54 kDa protein, Interferon-induced protein with tetratricopeptide repeats 2, CIG-42, G10P2, IFI54, IFIT-2, IFI-54K, ISG-54 K, IFIT2, ISG54
Purification	Purified by antigen affinity column.
Accession	P09913
Stability and Storage	Use a manual defrost freezer and avoid repeated freeze thaw cycles. Store at 2 to 8°C for frequent use. Store at -20 to -80°C for twelve months from the date of receipt.
Note	For research use only.

Data Image



Recombinant Protein lysates were subjected to SDS PAGE followed by western blot with IFIT2 antibody (PHC44001) at 1 µg/ml.

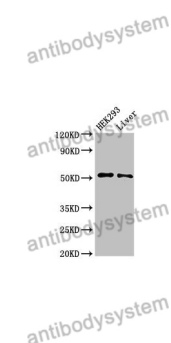
Lane 1: Recombinant protein

Second Ab: Goat Anti-Rabbit IgG H&L Polyclonal antibody, HRP (PTB96431) at 0.1 µg/mL.

Predict MW: 83 kDa

Observed MW: 83 kDa

Various lysates were subjected to SDS PAGE followed by western blot with IFIT2 antibody (PHC44001) at 1 µg/ml.



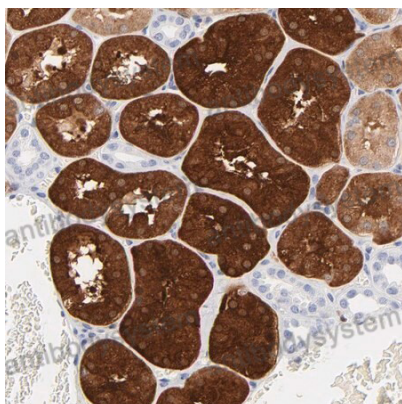
Lane 1: HEK293

Lane 2: Rat liver

Second Ab: Goat Anti-Rabbit IgG H&L Polyclonal antibody, HRP (PTB96431) at 0.1 µg/mL.

Predict MW: 56 kDa

Observed MW: 56 kDa



Immunohistochemical

Immunohistochemical analysis of human kidney stained for IFIT2 with PHC44001.