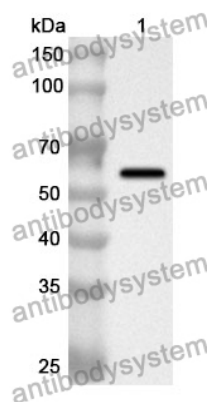


Anti-HSPD1 Polyclonal Antibody

Summary

Catalog No.	PHC83701
Host species	Rabbit
Tested applications	ELISA: 1:4000-1:8000, IHC: 1:50-1:100, WB: 1:1000-1:4000
Species reactivity	Human, Mouse, Rat
Immunogen	E. coli - derived recombinant Human HSPD1 (Ala27-Phe573).
Form	Liquid
Storage buffer	0.01M PBS, pH 7.4, 50% Glycerol, 0.05% Proclin 300.
Clonality	Polyclonal
Isotype	IgG
Applications	ELISA, IHC, WB
Target	60 kDa heat shock protein,mitochondrial,HSP-60,HuCHA60,Chaperonin 60,HSP60,Mitochondrial matrix protein P1,Hsp60,HSPD1,60 kDa chaperonin,CPN60,P60 lymphocyte protein,Heat shock protein 60
Purification	Purified by antigen affinity column.
Accession	P10809
Stability and Storage	Use a manual defrost freezer and avoid repeated freeze thaw cycles. Store at 2 to 8°C for frequent use. Store at -20 to -80°C for twelve months from the date of receipt.
Note	For research use only.

Data Image



Western Blot

Recombinant Protein lysates were subjected to SDS PAGE followed by western blot with HSPD1 antibody (PHC83701) at 1 μ g/ml.

Lane 1: Recombinant Protein

Second Ab: Goat Anti-Rabbit IgG H&L Polyclonal antibody, HRP (PTB96431) at 0.1 μ g/mL.

Predict MW: 60 kDa

Observed MW: 60 kDa