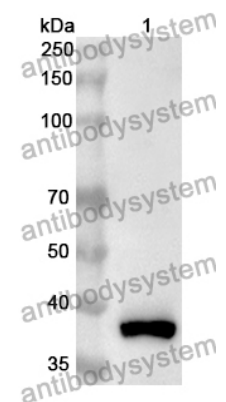


Anti-Human MIEF2 Polyclonal Antibody

Summary

Catalog No.	PHK37201
Host species	Rabbit
Tested applications	ELISA: 1:4000-1:8000, IHC: 1:50-1:100, WB: 1:1000-1:4000
Species reactivity	Human
Immunogen	E. coli - derived recombinant Human MIEF2 (Thr126-Leu454).
Form	Liquid
Storage buffer	0.01M PBS, pH 7.4, 50% Glycerol, 0.05% Proclin 300.
Clonality	Polyclonal
Isotype	IgG
Applications	ELISA, IHC, WB
Target	MID49, Smith-Magenis syndrome chromosomal region candidate gene 7 protein, MIEF2, Mitochondrial dynamics protein of 49 kDa, SMCR7, Mitochondrial dynamics protein MID49, Mitochondrial elongation factor 2
Purification	Purified by antigen affinity column.
Accession	Q96C03
Stability and Storage	Use a manual defrost freezer and avoid repeated freeze thaw cycles. Store at 2 to 8°C for frequent use. Store at -20 to -80°C for twelve months from the date of receipt.
Note	For research use only.

Data Image



WESTERN-BLOT

Recombinant Protein lysates were subjected to SDS PAGE followed by western blot with MIEF2 antibody (PHK37201) at 1 μ g/ml.

Lane 1: Recombinant protein

Second Ab: Goat Anti-Rabbit IgG H&L Polyclonal antibody, HRP (PTB96431) at 0.1 μ g/mL.

Predict MW: 38 kDa

Observed MW: 38 kDa