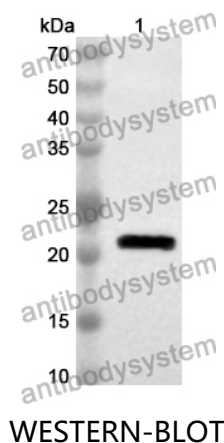


Anti-Human LIN28A Polyclonal Antibody

Summary

| | |
|------------------------------|---|
| Catalog No. | PHK37001 |
| Host species | Rabbit |
| Tested applications | ELISA: 1:4000-1:8000, IHC: 1:50-1:100, WB: 1:1000-1:4000 |
| Species reactivity | Human |
| Immunogen | E. coli - derived recombinant Human LIN28A (Gln36-Gly111). |
| Form | Liquid |
| Storage buffer | 0.01M PBS, pH 7.4, 50% Glycerol, 0.05% Proclin 300. |
| Clonality | Polyclonal |
| Isotype | IgG |
| Applications | ELISA, IHC, WB |
| Target | CSDD1, Zinc finger CCHC domain-containing protein 1, LIN28, LIN28A, Lin-28A, Protein lin-28 homolog A, ZCCHC1 |
| Purification | Purified by antigen affinity column. |
| Accession | Q9H9Z2 |
| Stability and Storage | Use a manual defrost freezer and avoid repeated freeze thaw cycles. Store at 2 to 8°C for frequent use. Store at -20 to -80°C for twelve months from the date of receipt. |
| Note | For research use only. |

Data Image



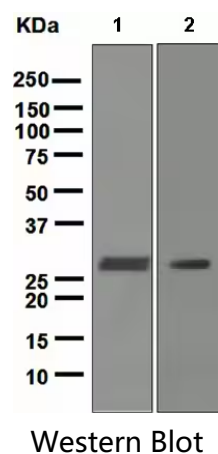
Recombinant Protein lysates were subjected to SDS PAGE followed by western blot with LIN28A antibody (PHK37001) at 1 µg/ml.

Lane 1: Recombinant protein

Second Ab: Goat Anti-Rabbit IgG H&L Polyclonal antibody, HRP (PTB96431) at 0.1 µg/mL.

Predict MW: 22 kDa

Observed MW: 22 kDa



Various lysates were subjected to SDS PAGE followed by western blot with LIN28A antibody (PHK37001) at 1 µg/ml.

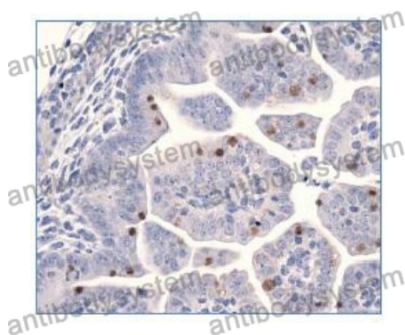
Lane 1: JAR

Lane 2: NCCIT

Second Ab: Goat Anti-Rabbit IgG H&L Polyclonal antibody, HRP (PTB96431) at 0.1 µg/mL.

Predict MW: 23 kDa

Observed MW: 28 kDa



Immunohistochemical

Immunohistochemical analysis of mouse embryo stained for LIN28A with PHK37001.