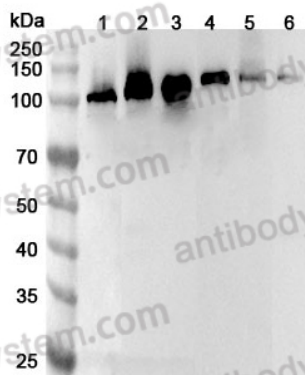


Anti-Human CAPRIN1 Polyclonal Antibody

Summary

Catalog No.	PHG79901
Host species	Rabbit
Tested applications	ELISA: 1:4000-1:8000, IHC: 1:50-1:100, WB: 1:1000-1:4000
Species reactivity	Human
Immunogen	E. coli - derived recombinant Human CAPRIN1 (Arg132-Asn251).
Form	Liquid
Storage buffer	0.01M PBS, pH 7.4, 50% Glycerol, 0.05% Proclin 300.
Clonality	Polyclonal
Isotype	IgG
Applications	ELISA, IHC, WB
Target	GPI-anchored protein p137, Cytoplasmic activation- and proliferation-associated protein 1, p137GPI, RNG105, M11S1, Caprin-1, Cell cycle-associated protein 1, RNA granule protein 105, CAPRIN1, GPIP137, GPI-anchored membrane protein 1, GPI-p137, GPIAP1, Membrane component chromosome 11 surface marker 1
Purification	Purified by antigen affinity column.
Accession	Q14444
Stability and Storage	Use a manual defrost freezer and avoid repeated freeze thaw cycles. Store at 2 to 8°C for frequent use. Store at -20 to -80°C for twelve months from the date of receipt.
Note	For research use only.

Data Image



Western Blot

Various lysates were subjected to SDS PAGE followed by western blot with CARPIN1 antibody (PHG79901) at 1 µg/ml.

Lane 1: NIH3T3 cell lysate

Lane 2: Jurkat cell lysate

Lane 3: 293T cell lysate

Lane 4: K562 cell lysate

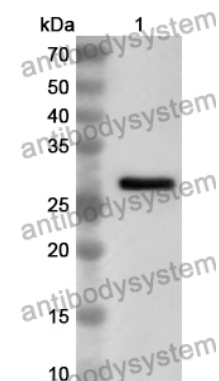
Lane 5: Mouse brain lysate

Lane 6: Rat brain lysate

Second Ab: Goat Anti-Rabbit IgG H&L Polyclonal antibody, HRP (PTB96431) at 0.1 µg/mL.

Predict MW: 78 kDa

Observed MW: 116 kDa



WESTERN-BLOT

Recombinant Protein lysates were subjected to SDS PAGE followed by western blot with CAPRIN1 antibody (PHG79901) at 1 µg/ml.

Lane 1: Recombinant protein

Second Ab: Goat Anti-Rabbit IgG H&L Polyclonal antibody, HRP (PTB96431) at 0.1 µg/mL.

Predict MW: 28 kDa

Observed MW: 28 kDa