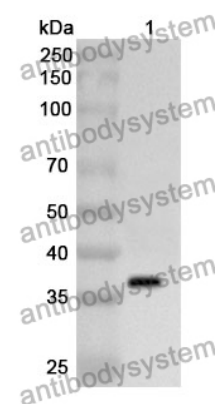


Anti-ALPG Polyclonal Antibody

Summary

Catalog No.	PHC82901
Host species	Rabbit
Tested applications	ELISA: 1:4000-1:8000, IHC: 1:50-1:100, WB: 1:1000-1:4000
Species reactivity	Human
Immunogen	E. coli - derived recombinant Human ALPG (Ile20-Arg333).
Form	Liquid
Storage buffer	0.01M PBS, pH 7.4, 50% Glycerol, 0.05% Proclin 300.
Clonality	Polyclonal
Isotype	IgG
Applications	ELISA, IHC, WB
Target	Placental alkaline phosphatase-like, PLAP-like, ALPPL2, Alkaline phosphatase, placental-like, ALP-1, GCAP, Germ cell alkaline phosphatase, ALPPL, Alkaline phosphatase Nagao isozyme, ALPG, Alkaline phosphatase, germ cell type
Purification	Purified by antigen affinity column.
Accession	P10696
Stability and Storage	Use a manual defrost freezer and avoid repeated freeze thaw cycles. Store at 2 to 8°C for frequent use. Store at -20 to -80°C for twelve months from the date of receipt.
Note	For research use only.

Data Image



WESTERN BLOT

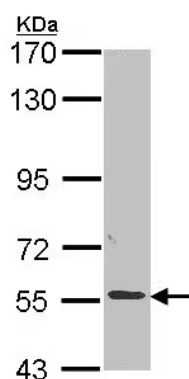
Recombinant Protein lysates were subjected to SDS PAGE followed by western blot with ALPG antibody (PHC82901) at 1 μ g/ml.

Lane 1: Recombinant protein

Second Ab: Goat Anti-Rabbit IgG H&L Polyclonal antibody, HRP (PTB96431) at 0.1 μ g/mL.

Predict MW: 37 kDa

Observed MW: 37 kDa



Western Blot

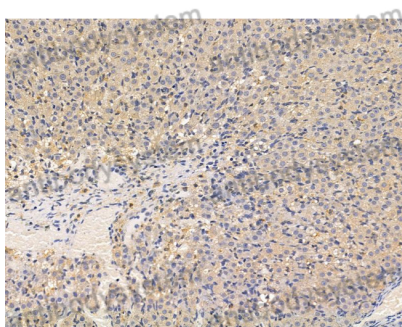
Various lysates were subjected to SDS PAGE followed by western blot with ALPG antibody (PHC82901) at 1 μ g/ml.

Lane 1: A549

Second Ab: Goat Anti-Rabbit IgG H&L Polyclonal antibody, HRP (PTB96431) at 0.1 μ g/mL.

Predict MW: 57 kDa

Observed MW: 57 kDa



Immunohistochemical

Immunohistochemical analysis of rat skin stained for ALPG with PHC82901.