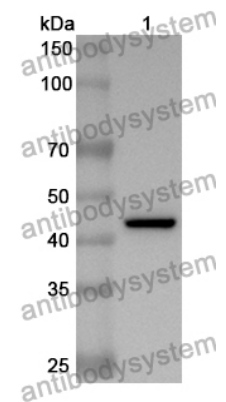


Anti-Human ROCK1 Polyclonal Antibody

Summary

Catalog No.	PHG54301
Host species	Rabbit
Tested applications	ELISA: 1:4000-1:8000, IHC: 1:50-1:100, WB: 1:1000-1:4000
Species reactivity	Human
Immunogen	E. coli - derived recombinant Human ROCK1 (Met1-Thr351).
Form	Liquid
Storage buffer	0.01M PBS, pH 7.4, 50% Glycerol, 0.05% Proclin 300.
Clonality	Polyclonal
Isotype	IgG
Applications	ELISA, IHC, WB
Target	Renal carcinoma antigen NY-REN-35, p160 ROCK-1, p160ROCK, Rho-associated protein kinase 1, Rho-associated, coiled-coil-containing protein kinase I, Rho-associated, coiled-coil-containing protein kinase 1, ROCK-I, ROCK1
Purification	Purified by antigen affinity column.
Accession	Q13464
Stability and Storage	Use a manual defrost freezer and avoid repeated freeze thaw cycles. Store at 2 to 8°C for frequent use. Store at -20 to -80°C for twelve months from the date of receipt.
Note	For research use only.

Data Image



WESTERN-BLOT

Recombinant Protein lysates were subjected to SDS PAGE followed by western blot with ROCK1 antibody (PHG54301) at 1 μ g/ml.

Lane 1: Recombinant protein

Second Ab: Goat Anti-Rabbit IgG H&L Polyclonal antibody, HRP (PTB96431) at 0.1 μ g/mL.

Predict MW: 43 kDa

Observed MW: 43 kDa