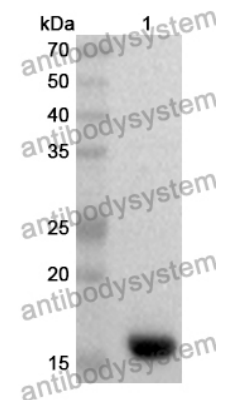


Anti-Human GABARAPL1 Polyclonal Antibody

Summary

Catalog No.	PHK36401
Host species	Rabbit
Tested applications	ELISA: 1:4000-1:8000, IHC: 1:50-1:100, WB: 1:1000-1:4000
Species reactivity	Human
Immunogen	E. coli - derived recombinant Human GABARAPL1 (Met1-Lys117).
Form	Liquid
Storage buffer	0.01M PBS, pH 7.4, 50% Glycerol, 0.05% Proclin 300.
Clonality	Polyclonal
Isotype	IgG
Applications	ELISA, IHC, WB
Target	Early estrogen-regulated protein, Gamma-aminobutyric acid receptor-associated protein-like 1, GEC-1, GABARAPL1, Glandular epithelial cell protein 1, GEC1, GABA(A) receptor-associated protein-like 1
Purification	Purified by antigen affinity column.
Accession	Q9H0R8
Stability and Storage	Use a manual defrost freezer and avoid repeated freeze thaw cycles. Store at 2 to 8°C for frequent use. Store at -20 to -80°C for twelve months from the date of receipt.
Note	For research use only.

Data Image



WESTERN-BLOT

Recombinant Protein lysates were subjected to SDS PAGE followed by western blot with GABARAPL1 antibody (PHK36401) at 1 μ g/ml.

Lane 1: Recombinant protein

Second Ab: Goat Anti-Rabbit IgG H&L Polyclonal antibody, HRP (PTB96431) at 0.1 μ g/mL.

Predict MW: 16 kDa

Observed MW: 16 kDa