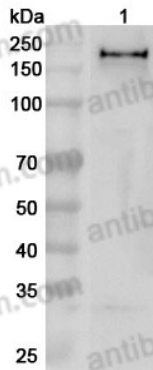


Anti-Human ZEB1 Polyclonal Antibody

Summary

Catalog No.	PHE21501
Host species	Rabbit
Tested applications	ELISA: 1:4000-1:8000, IHC: 1:50-1:100, WB: 1:1000-1:4000
Species reactivity	Human
Immunogen	E. coli - derived recombinant Human ZEB1 (Ser583-Glu643).
Form	Liquid
Storage buffer	0.01M PBS, pH 7.4, 50% Glycerol, 0.05% Proclin 300.
Clonality	Polyclonal
Isotype	IgG
Applications	ELISA, IHC, WB
Target	Transcription factor 8, NIL-2-A zinc finger protein, Zinc finger E-box-binding homeobox 1, ZEB1, Negative regulator of IL2, TCF-8, TCF8, AREB6
Purification	Purified by antigen affinity column.
Accession	P37275
Stability and Storage	Use a manual defrost freezer and avoid repeated freeze thaw cycles. Store at 2 to 8°C for frequent use. Store at -20 to -80°C for twelve months from the date of receipt.
Note	For research use only.

Data Image



WESTERN BLOT

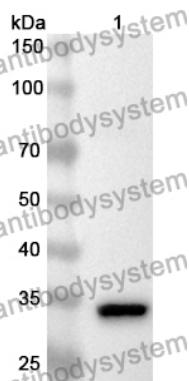
Various lysates were subjected to SDS PAGE followed by western blot with ZEB1 antibody (PHE21501) at 1 μ g/mL .

Lane 1: Jurkat cell lysate

Second Ab: Goat Anti-Rabbit IgG H&L Polyclonal antibody, HRP (PTB96431) at 0.1 μ g/mL.

Predict MW: 124 kDa

Observed MW: 200 kDa



WESTERN-BLOT

Recombinant Protein lysates were subjected to SDS PAGE followed by western blot with ZEB1 antibody (PHE21501) at 1 μ g/mL.

Lane 1: Recombinant protein

Second Ab: Goat Anti-Rabbit IgG H&L Polyclonal antibody, HRP (PTB96431) at 0.1 μ g/mL.

Predict MW: 35 kDa

Observed MW: 35 kDa