

Anti-Human TOMM20 Polyclonal Antibody

Summary

Catalog No.	PHH08101
Host species	Rabbit
Tested applications	ELISA: 1:4000-1:8000, IHC: 1:50-1:100, WB: 1:1000-1:4000
Species reactivity	Human
Immunogen	E. coli - derived recombinant Human TOMM20 (Arg51-Glu145).
Form	Liquid
Storage buffer	0.01M PBS, pH 7.4, 50% Glycerol, 0.05% Proclin 300.
Clonality	Polyclonal
Isotype	IgG
Applications	ELISA, IHC, WB
Target	Mitochondrial 20 kDa outer membrane protein, Mitochondrial import receptor subunit TOM20 homolog, KIAA0016, TOMM20, Outer mitochondrial membrane receptor Tom20
Purification	Purified by antigen affinity column.
Accession	Q15388
Stability and Storage	Use a manual defrost freezer and avoid repeated freeze thaw cycles. Store at 2 to 8°C for frequent use. Store at -20 to -80°C for twelve months from the date of receipt.
Note	For research use only.

Data Image

Various lysates were subjected to SDS PAGE followed by western blot with TOMM20 antibody (PHH08101) at 1 μ g/ml.

Lane 1: Hela cell lysate
Lane 2: HepG2 cell lysate
Lane 3: Jurkat cell lysate
Lane 4: THP-1 cell lysate

Second Ab: Goat Anti-Rabbit IgG H&L Polyclonal antibody, HRP (PTB96431) at 0.1 μ g/mL.

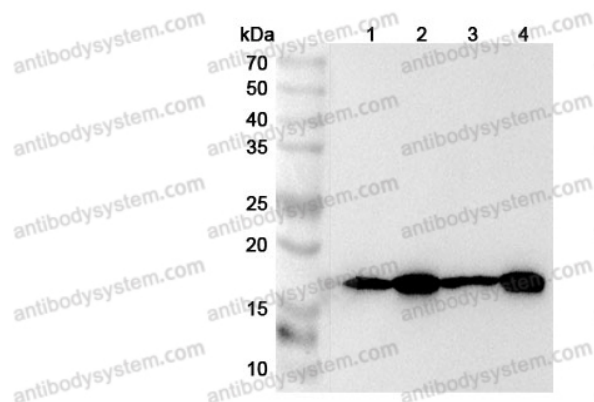
Predict MW: 16 kDa
Observed MW: 16 kDa

Recombinant Protein lysates were subjected to SDS PAGE followed by western blot with TOMM20 antibody (PHH08101) at 1 μ g/ml.

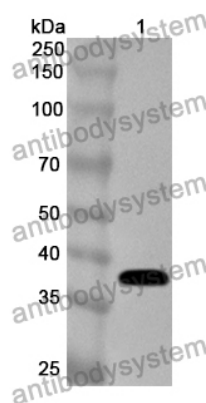
Lane 1: Recombinant Protein

Second Ab: Goat Anti-Rabbit IgG H&L Polyclonal antibody, HRP (PTB96431) at 0.1 μ g/mL.

Predict MW: 39 kDa
Observed MW: 39 kDa



Western Blot



Western Blot