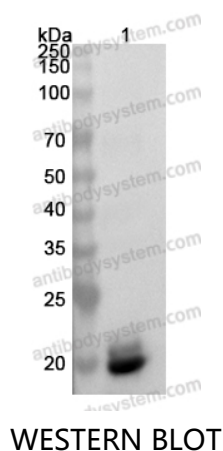


Anti-Lassa virus/LASV GPC Polyclonal Antibody

Summary

Catalog No.	PVV04302
Host species	Rabbit
Tested applications	ELISA: 1:4000-1:8000, WB: 1:1000-1:4000
Species reactivity	Lassa virus (strain Mouse/Sierra Leone/Josiah/1976) (LASV)
Immunogen	E. coli - derived recombinant Lassa virus/LASV GPC (Gly260-Asp432).
Form	Liquid
Storage buffer	0.01M PBS, pH 7.4, 50% Glycerol, 0.05% Proclin 300.
Concentration	0.83 mg/ml
Clonality	Polyclonal
Isotype	IgG
Applications	ELISA, IHC, WB
Target	Pre-glycoprotein polyprotein GP complex, Pre-GP-C, Stable signal peptide, SSP, Glycoprotein G1, GP1, Glycoprotein G2, GP2, GPC, GP-C
Purification	Purified by antigen affinity column.
Accession	P08669
Stability and Storage	Use a manual defrost freezer and avoid repeated freeze thaw cycles. Store at 2 to 8°C for frequent use. Store at -20 to -80°C for twelve months from the date of receipt.
Note	For research use only.

Data Image



Recombinant Protein lysates were subjected to SDS PAGE followed by western blot with Lassa virus/LASV GPC antibody (PVV04302) at 1 µg/ml.

Lane 1: Recombinant Lassa virus/LASV GPC Protein ([YVV04302](#))

Second Ab: Goat Anti-Rabbit IgG H&L Polyclonal antibody, HRP (PTB96431) at 0.1 µg/mL.

Predict MW: 21 kDa

Observed MW: 21 kDa