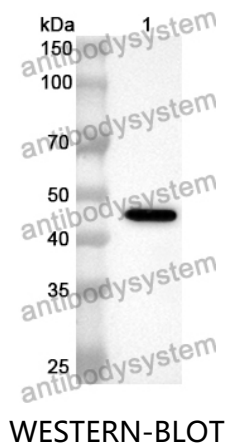


Anti-Human STAMBPL1/AMSHLP Polyclonal Antibody

Summary

Catalog No.	PHK35201
Host species	Rabbit
Tested applications	ELISA: 1:4000-1:8000, IHC: 1:50-1:100, WB: 1:1000-1:4000
Species reactivity	Human
Immunogen	E. coli - derived recombinant Human STAMBPL1/AMSHLP (Arg267-Arg436).
Form	Liquid
Storage buffer	0.01M PBS, pH 7.4, 50% Glycerol, 0.05% Proclin 300.
Clonality	Polyclonal
Isotype	IgG
Applications	ELISA, IHC, WB
Target	AMSHLP, AMSH-LP, AMSH-like protease, STAMBPL1, STAM-binding protein-like 1, KIAA1373
Purification	Purified by antigen affinity column.
Accession	Q96FJ0
Stability and Storage	Use a manual defrost freezer and avoid repeated freeze thaw cycles. Store at 2 to 8°C for frequent use. Store at -20 to -80°C for twelve months from the date of receipt.
Note	For research use only.

Data Image



Recombinant Protein lysates were subjected to SDS PAGE followed by western blot with STAMBPL1/AMSHLP antibody (PHK35201) at 1 µg/ml.

Lane 1: Recombinant protein

Second Ab: Goat Anti-Rabbit IgG H&L Polyclonal antibody, HRP (PTB96431) at 0.1 µg/mL.

Predict MW: 47 kDa

Observed MW: 47 kDa