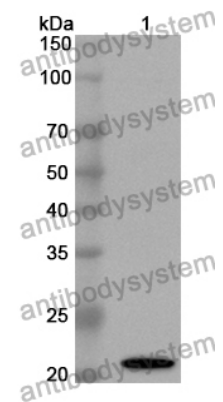


Anti-Plasmodium relictum MSP1 Polyclonal Antibody

Summary

| | |
|------------------------------|---|
| Catalog No. | PXX52301 |
| Host species | Rabbit |
| Tested applications | ELISA: 1:4000-1:8000, WB: 1:2000-1:8000 |
| Species reactivity | Plasmodium relictum |
| Immunogen | E. coli - derived recombinant Plasmodium relictum MSP1 (Glu1400-Gln1567). |
| Form | Liquid |
| Storage buffer | 0.01M PBS, pH 7.4, 50% Glycerol, 0.05% Proclin 300. |
| Clonality | Polyclonal |
| Isotype | IgG |
| Applications | ELISA, IHC, WB |
| Target | Merozoite surface protein 1, Merozoite surface antigens, PMMSA, MSP1, PRELSG_0728000 |
| Purification | Purified by antigen affinity column. |
| Accession | A0A1J1H3N0 |
| Stability and Storage | Use a manual defrost freezer and avoid repeated freeze thaw cycles. Store at 2 to 8°C for frequent use. Store at -20 to -80°C for twelve months from the date of receipt. |
| Note | For research use only. |

Data Image



WESTERN BLOT

Recombinant Protein lysates were subjected to SDS PAGE followed by western blot with MSP1 antibody (PXX52301) at 1 $\mu\text{g}/\text{ml}$.

Lane 1: Recombinant protein

Second Ab: Goat Anti-Rabbit IgG H&L Polyclonal antibody, HRP (PTB96431) at 0.1 $\mu\text{g}/\text{mL}$.

Predict MW: 22 kDa

Observed MW: 22 kDa