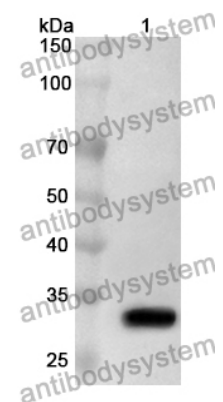


Anti-Rat SCNN1A/SCNN1 Polyclonal Antibody

Summary

Catalog No.	PRE20801
Host species	Rabbit
Tested applications	ELISA: 1:4000-1:8000, IHC: 1:50-1:100, WB: 1:1000-1:4000
Species reactivity	Rat
Immunogen	E. coli - derived recombinant Rat SCNN1A/SCNN1 (Glu132-Asp391).
Form	Liquid
Storage buffer	0.01M PBS, pH 7.4, 50% Glycerol, 0.05% Proclin 300.
Clonality	Polyclonal
Isotype	IgG
Applications	ELISA, IHC, WB
Target	Amiloride-sensitive sodium channel subunit alpha, Alpha-NaCH, Epithelial Na(+) channel subunit alpha, Alpha-ENaC, Nonvoltage-gated sodium channel 1 subunit alpha, SCNEA, Scnn1a, Renac
Purification	Purified by antigen affinity column.
Accession	P37089
Stability and Storage	Use a manual defrost freezer and avoid repeated freeze thaw cycles. Store at 2 to 8°C for frequent use. Store at -20 to -80°C for twelve months from the date of receipt.
Note	For research use only.

Data Image



WESTERN BLOT

Recombinant Protein lysates were subjected to SDS PAGE followed by western blot with SCNN1A/SCNN1 antibody (PRE20801) at 1 μ g/ml.

Lane 1: Recombinant protein

Second Ab: Goat Anti-Rabbit IgG H&L Polyclonal antibody, HRP (PTB96431) at 0.1 μ g/mL.

Predict MW: 32 kDa

Observed MW: 32 kDa