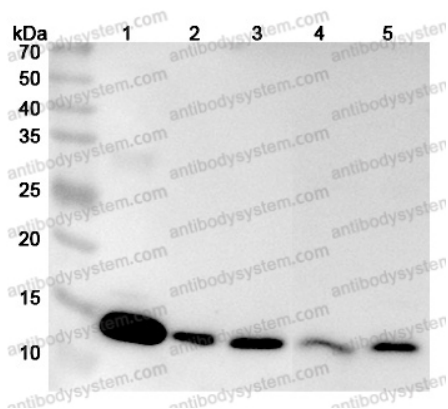


Anti-Human Gal-1/LGALS1 Polyclonal Antibody

Summary

Catalog No.	PHC40101
Host species	Rabbit
Tested applications	ELISA: 1:4000-1:8000, IHC: 1:50-1:100, WB: 1:1000-1:4000
Species reactivity	Human
Immunogen	E. coli - derived recombinant Human Gal-1/LGALS1 (Met1-Asp135).
Form	Liquid
Storage buffer	0.01M PBS, pH 7.4, 50% Glycerol, 0.05% Proclin 300.
Clonality	Polyclonal
Isotype	IgG
Applications	ELISA, IHC, WB
Target	HLBP14, Lactose-binding lectin 1, LGALS1, HBL, HPL, Beta-galactoside-binding lectin L-14-I, Gal-1, Lectin galactoside-binding soluble 1, Putative MAPK-activating protein PM12, S-Lac lectin 1, Galaptin, Galectin-1, 14 kDa laminin-binding protein, 14 kDa lectin
Purification	Purified by antigen affinity column.
Accession	P09382
Stability and Storage	Use a manual defrost freezer and avoid repeated freeze thaw cycles. Store at 2 to 8°C for frequent use. Store at -20 to -80°C for twelve months from the date of receipt.
Note	For research use only.

Data Image



Western Blot

Various lysates were subjected to SDS PAGE followed by western blot with Galectin-1 antibody (PHC40101) at 1 μ g/ml.

Lane 1: NIH3T3 cell lysate

Lane 2: PC-12 cell lysate

Lane 3: LO2 cell lysate

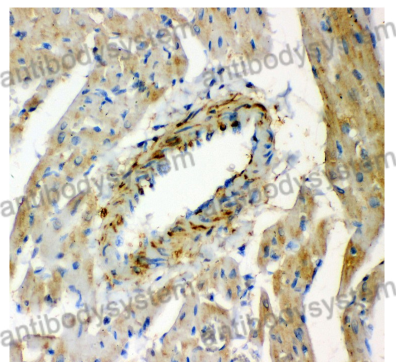
Lane 4: U2OS cell lysate

Lane 5: HCT116 cell lysate

Second Ab: Goat Anti-Rabbit IgG H&L Polyclonal antibody, HRP (PTB96431) at 0.1 μ g/mL.

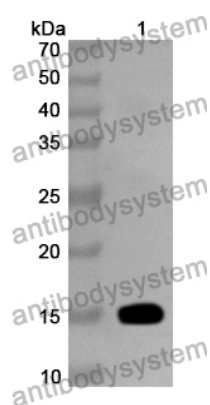
Predict MW: 15 kDa

Observed MW: 15 kDa



Immunohistochemical

Immunohistochemical analysis of rat cardiac muscle stained for Galectin-1 with PHC40101.



Western Blot

Recombinant Protein lysates were subjected to SDS PAGE followed by western blot with Gal-1/LGALS1 antibody (PHC40101) at 1 μ g/ml.

Lane 1: Recombinant Protein

Second Ab: Goat Anti-Rabbit IgG H&L Polyclonal antibody, HRP (PTB96431) at 0.1 μ g/mL.

Predict MW: 16 kDa

Observed MW: 16 kDa