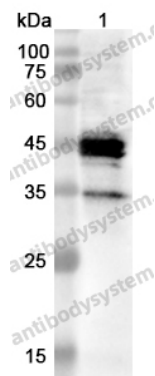


Anti-HLA-C Polyclonal Antibody

Summary

Catalog No.	PHC80601
Host species	Rabbit
Tested applications	ELISA: 1:4000-1:8000, IHC: 1:50-1:100, WB: 1:1000-1:4000
Species reactivity	Human
Immunogen	E. coli - derived recombinant Human HLA-C (Ser48-Thr305).
Form	Liquid
Storage buffer	0.01M PBS, pH 7.4, 50% Glycerol, 0.05% Proclin 300.
Clonality	Polyclonal
Isotype	IgG
Applications	ELISA, IHC, WB
Target	HLA-Cw,HLA-C,Human leukocyte antigen C,HLAC,HLA class I histocompatibility antigen,C alpha chain
Purification	Purified by antigen affinity column.
Accession	P10321
Stability and Storage	Use a manual defrost freezer and avoid repeated freeze thaw cycles. Store at 2 to 8°C for frequent use. Store at -20 to -80°C for twelve months from the date of receipt.
Note	For research use only.

Data Image



Western blot

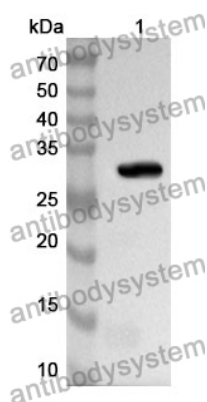
Various lysates were subjected to SDS PAGE followed by western blot with HLA-C antibody (PHC80601) at 0.57ug/ml.

Lane 1: HepG2 cell lysate

Second Ab: Goat Anti-Rabbit IgG H&L Polyclonal antibody, HRP (PTB96431) at 0.1 µg/mL.

Predict MW: 40,36 kDa

Observed MW: 45,35 kDa



Western Blot

Recombinant Protein lysates were subjected to SDS PAGE followed by western blot with HLA-C antibody (PHC80601) at 1 µg/ml.

Lane 1: Recombinant Protein

Second Ab: Goat Anti-Rabbit IgG H&L Polyclonal antibody, HRP (PTB96431) at 0.1 µg/mL.

Predict MW: 32 kDa

Observed MW: 32 kDa