

Anti-LAMC1 Polyclonal Antibody

Summary

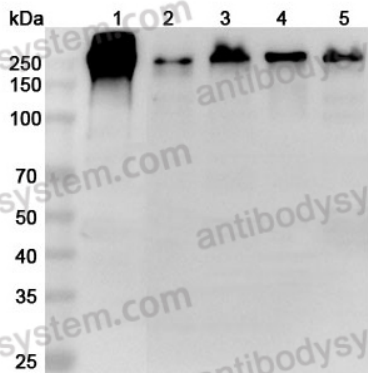
Catalog No.	PHC85002
Host species	Rabbit
Tested applications	ELISA: 1:4000-1:8000, IHC: 1:50-1:100, WB: 1:1000-1:4000
Species reactivity	Human, Mouse, Rat
Immunogen	E. coli - derived recombinant Human LAMC1 (Asn1364-Pro1609).
Form	Liquid
Storage buffer	0.01M PBS, pH 7.4, 50% Glycerol, 0.05% Proclin 300.
Concentration	0.43 mg/ml
Clonality	Polyclonal
Isotype	IgG
Applications	ELISA, IHC, WB
Target	Laminin-7 subunit gamma, Laminin-1 subunit gamma, Laminin subunit gamma-1, Laminin-10 subunit gamma, Laminin-2 subunit gamma, S-laminin subunit gamma, LAMC1, Laminin-11 subunit gamma, Laminin-3 subunit gamma, S-LAM gamma, Laminin-6 subunit gamma, Laminin-9 subunit gamma, Laminin-4 subunit gamma, Laminin-8 subunit gamma, LAMB2, Laminin B2 chain
Purification	Purified by antigen affinity column.
Accession	P11047

Stability and Storage

Use a manual defrost freezer and avoid repeated freeze thaw cycles. Store at 2 to 8°C for frequent use. Store at -20 to -80°C for twelve months from the date of receipt.

Note

For research use only.

Data Image

Western Blot

Various lysates were subjected to SDS PAGE followed by western blot with LAMC1 antibody (PHC85002) at 1 µg/ml.

Lane 1: HepG2 cell lysate

Lane 2: A431 cell lysate

Lane 3: DU145 cell lysate

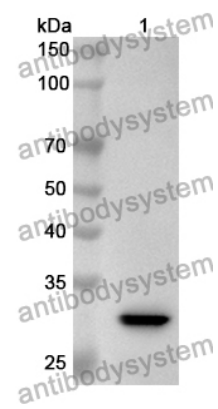
Lane 4: PC-12 cell lysate

Lane 5: MCF-7 cell lysate

Second Ab: Goat Anti-Rabbit IgG H&L Polyclonal antibody, HRP (PTB96431) at 0.1 µg/mL.

Predict MW: 178 kDa

Observed MW: 220 kDa



WESTERN BLOT

Recombinant Protein lysates were subjected to SDS PAGE followed by western blot with LAMC1 antibody (PHC85002) at 1 µg/ml.

Lane 1: Recombinant protein

Second Ab: Goat Anti-Rabbit IgG H&L Polyclonal antibody, HRP (PTB96431) at 0.1 µg/mL.

Predict MW: 30 kDa

Observed MW: 30 kDa