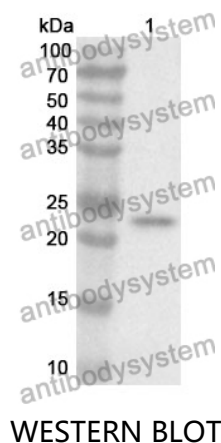


Anti-CD48 Polyclonal Antibody

Summary

Catalog No.	PHC39801
Host species	Rabbit
Tested applications	ELISA: 1:4000-1:8000, IHC: 1:50-1:100, WB: 1:1000-1:4000
Species reactivity	Human
Immunogen	E. coli - derived recombinant Human CD48 (Gln27-Ser220).
Form	Liquid
Storage buffer	0.01M PBS, pH 7.4, 50% Glycerol, 0.05% Proclin 300.
Clonality	Polyclonal
Isotype	IgG
Applications	ELISA, IHC, WB
Target	Signaling lymphocytic activation molecule 2,TCT.1,CD48 antigen,B-lymphocyte activation marker BLAST-1,BCM1,CD48,BLAST1,Leukocyte antigen MEM-102,SLAMF2,BCM1 surface antigen,SLAM family member 2
Purification	Purified by antigen affinity column.
Accession	P09326
Stability and Storage	Use a manual defrost freezer and avoid repeated freeze thaw cycles. Store at 2 to 8°C for frequent use. Store at -20 to -80°C for twelve months from the date of receipt.
Note	For research use only.

Data Image



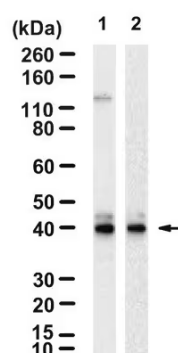
Recombinant Protein lysates were subjected to SDS PAGE followed by western blot with CD48 antibody (PHC39801) at 1 μ g/ml.

Lane 1: Recombinant protein

Second Ab: Goat Anti-Rabbit IgG H&L Polyclonal antibody, HRP (PTB96431) at 0.1 μ g/mL.

Predict MW: 25 kDa

Observed MW: 25 kDa



Various lysates were subjected to SDS PAGE followed by western blot with CD48 antibody (PHC39801) at 1 μ g/ml.

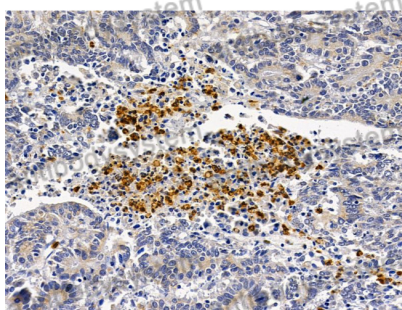
Lane 1: RAW264.7

Lane 2: EL4

Second Ab: Goat Anti-Rabbit IgG H&L Polyclonal antibody, HRP (PTB96431) at 0.1 μ g/mL.

Predict MW: 28 kDa

Observed MW: 40 kDa



Immunohistochemical

Immunohistochemical analysis of human prostate cancer tissue stained for CD48 with PHC39801.