

Recombinant Human ALDH4A1 Protein, N-His

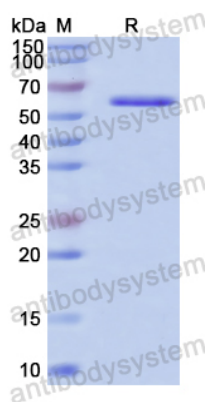
Summary

| | |
|-----------------------------------|---|
| Catalog No. | YHD85901 |
| Alternative Names | ALDH4, ALDH4A1, L-glutamate gamma-semialdehyde dehydrogenase, Aldehyde dehydrogenase family 4 member A1, P5CDH, P5C dehydrogenase, Delta-1-pyrroline-5-carboxylate dehydrogenase, mitochondrial |
| Form | Lyophilized |
| Storage buffer | Lyophilized from a solution in PBS pH 7.4, 0.02% NLS, 1mM EDTA, 4% Trehalose, 1% Mannitol. |
| Purity | >90% as determined by SDS-PAGE. |
| Applications | ELISA, Immunogen, SDS-PAGE, WB, Bioactivity testing in progress |
| Endotoxin level | Please contact with the lab for this information. |
| Expression system | E. coli |
| Accession | P30038 |
| Protein length | Ser44-Gln563 |
| Nature | Recombinant |
| Predicted molecular weight | 59.32 kDa |
| Stability and Storage | Use a manual defrost freezer and avoid repeated freeze thaw cycles. Store at 2 to 8°C for frequent use. Store at -20 to -80°C for twelve months from the date of receipt. |
| Reconstitution | Reconstitute in sterile water for a stock solution. A copy of datasheet will be provided with the products, please refer to it for details. |

Recombinant Proteins & Antibodies

| | |
|-----------------|--|
| Species | Homo sapiens (Human) |
| Shipping | In general, proteins are provided as lyophilized powder/frozen liquid. They are shipped out with dry ice/blue ice unless customers require otherwise. |
| Note | For research use only. |

Data Image



SDS-PAGE

SDS PAGE for Recombinant Human ALDH4A1
Protein