

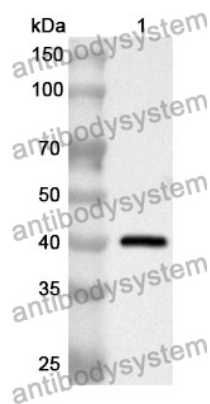
# Anti-ANXA2 Polyclonal Antibody

## Summary

---

<b>Catalog No.</b>	PHC25401
<b>Host species</b>	Rabbit
<b>Tested applications</b>	ELISA: 1:2000-1:8000, IHC: 1:50-1:100, WB: 1:500-1:4000
<b>Species reactivity</b>	Human, Mouse, Rat
<b>Immunogen</b>	E. coli - derived recombinant Human ANXA2 (Met1-Asp339).
<b>Form</b>	Liquid
<b>Storage buffer</b>	0.01M PBS, pH 7.4, 50% Glycerol, 0.05% Proclin 300.
<b>Concentration</b>	0.15 mg/ml
<b>Clonality</b>	Polyclonal
<b>Isotype</b>	IgG
<b>Applications</b>	ELISA, IHC, WB
<b>Target</b>	Lipocortin II,Annexin A2,Calpactin-1 heavy chain,PAP-IV,p36,CAL1H,Calpactin I heavy chain,ANX2,ANX2L4,Protein I,Annexin-2,LPC2D,Annexin II,ANXA2,Placental anticoagulant protein IV,Chromobindin-8
<b>Purification</b>	Purified by antigen affinity column.
<b>Accession</b>	P07355
<b>Stability and Storage</b>	Use a manual defrost freezer and avoid repeated freeze thaw cycles. Store at 2 to 8°C for frequent use. Store at -20 to -80°C for twelve months from the date of receipt.
<b>Note</b>	For research use only.

## Data Image



Western Blot

Recombinant Protein lysates were subjected to SDS PAGE followed by western blot with ANXA2 antibody (PHC25401) at 1 µg/ml.

Lane 1: Recombinant Protein

Second Ab: Goat Anti-Rabbit IgG H&L Polyclonal antibody, HRP (PTB96431) at 0.1 µg/mL.

Predict MW: 41 kDa

Observed MW: 41 kDa