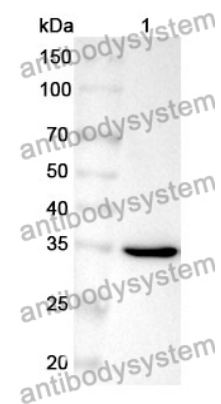


Anti-CD23/FCER2 Polyclonal Antibody

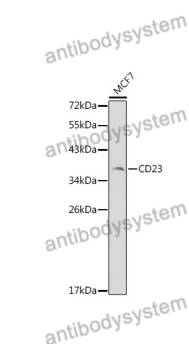
Summary

Catalog No.	PHC21301
Host species	Rabbit
Tested applications	ELISA: 1:4000-1:8000, IHC: 1:50-1:100, WB: 1:1000-1:4000
Species reactivity	Human
Immunogen	E. coli - derived recombinant Human CD23/FCER2 (Asp48-Ser321).
Form	Liquid
Storage buffer	0.01M PBS, pH 7.4, 50% Glycerol, 0.05% Proclin 300.
Clonality	Polyclonal
Isotype	IgG
Applications	ELISA, IHC, WB
Target	Lymphocyte IgE receptor,C-type lectin domain family 4 member J,Low affinity immunoglobulin epsilon Fc receptor,CD23A,BLAST-2,Immunoglobulin E-binding factor,IGEBF,CD23,Fc-epsilon-RII,CLEC4J,FCE2,FCER2
Purification	Purified by antigen affinity column.
Accession	P06734
Stability and Storage	Use a manual defrost freezer and avoid repeated freeze thaw cycles. Store at 2 to 8°C for frequent use. Store at -20 to -80°C for twelve months from the date of receipt.
Note	For research use only.

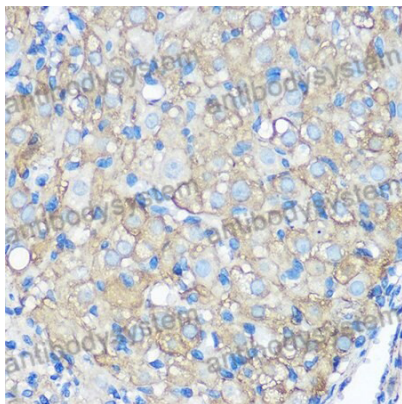
Data Image



WESTERN BLOT



Western Blot



Immunohistochemical

Recombinant Protein lysates were subjected to SDS PAGE followed by western blot with CD23/FCER2 antibody (PHC21301) at 1 µg/ml.

Lane 1: Recombinant protein

Second Ab: Goat Anti-Rabbit IgG H&L Polyclonal antibody, HRP (PTB96431) at 0.1 µg/mL.

Predict MW: 33 kDa

Observed MW: 33 kDa

Various lysates were subjected to SDS PAGE followed by western blot with FCER2 antibody (PHC21301) at 1 µg/ml.

Lane 1: MCF7

Second Ab: Goat Anti-Rabbit IgG H&L Polyclonal antibody, HRP (PTB96431) at 0.1 µg/mL.

Predict MW: 36 kDa

Observed MW: 37 kDa

Immunohistochemical analysis of rat ovary stained for FCER2 with PHC21301.