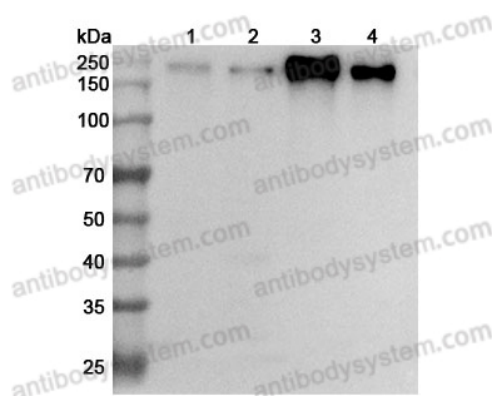


Anti-CD66e/CEA/CEACAM5 Polyclonal Antibody

Summary

Catalog No.	PHC21001
Host species	Rabbit
Tested applications	ELISA: 1:4000-1:8000, IHC: 1:50-1:100, WB: 1:1000-1:4000
Species reactivity	Human
Immunogen	E. coli - derived recombinant Human CD66e/CEA/CEACAM5 (Ala34-Leu234).
Form	Liquid
Storage buffer	0.01M PBS, pH 7.4, 50% Glycerol, 0.05% Proclin 300.
Clonality	Polyclonal
Isotype	IgG
Applications	ELISA, IHC, WB
Target	Meconium antigen 100,CEACAM5,CEA,CD66e,Carcinoembryonic antigen-related cell adhesion molecule 5,Carcinoembryonic antigen
Purification	Purified by antigen affinity column.
Accession	P06731
Stability and Storage	Use a manual defrost freezer and avoid repeated freeze thaw cycles. Store at 2 to 8°C for frequent use. Store at -20 to -80°C for twelve months from the date of receipt.
Note	For research use only.

Data Image



WESTERN BLOT

Various lysates were subjected to SDS PAGE followed by western blot with CEACAM5 antibody (PHC21001) at 1 μ g/ml.

Lane 1: HT-29 cell lysate

Lane 2: MCF-7 cell lysate

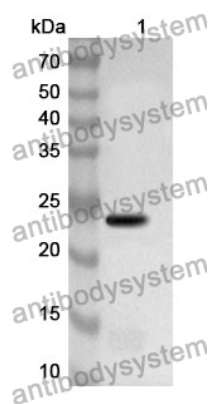
Lane 3: BxPC-3 cell lysate

Lane 4: SW620 cell lysate

Second Ab: Goat Anti-Rabbit IgG H&L Polyclonal antibody, HRP (PTB96431) at 0.1 μ g/mL.

Predict MW: 77 kDa

Observed MW: 200 kDa



Western Blot

Recombinant Protein lysates were subjected to SDS PAGE followed by western blot with CD66e/CEA/CEACAM5 antibody (PHC21001) at 1 μ g/ml.

Lane 1: Recombinant Protein

Second Ab: Goat Anti-Rabbit IgG H&L Polyclonal antibody, HRP (PTB96431) at 0.1 μ g/mL.

Predict MW: 25 kDa

Observed MW: 25 kDa