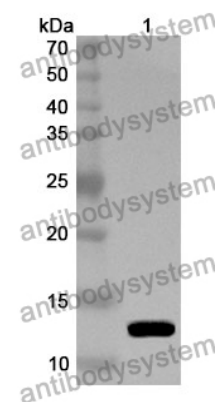


Anti-S100A6 Polyclonal Antibody

Summary

Catalog No.	PHC20601
Host species	Rabbit
Tested applications	ELISA: 1:4000-1:8000, IHC: 1:50-1:100, WB: 1:1000-1:4000
Species reactivity	Human, Mouse, Rat
Immunogen	E. coli - derived recombinant Human S100A6 (Met1-Gly90).
Form	Liquid
Storage buffer	0.01M PBS, pH 7.4, 50% Glycerol, 0.05% Proclin 300.
Clonality	Polyclonal
Isotype	IgG
Applications	ELISA, IHC, WB
Target	Calcyclin,S100A6,S100 calcium-binding protein A6,Protein S100-A6,Prolactin receptor-associated protein,MLN 4,CACY,PRA,Growth factor-inducible protein 2A9
Purification	Purified by antigen affinity column.
Accession	P06703
Stability and Storage	Use a manual defrost freezer and avoid repeated freeze thaw cycles. Store at 2 to 8°C for frequent use. Store at -20 to -80°C for twelve months from the date of receipt.
Note	For research use only.

Data Image



WESTERN BLOT

Recombinant Protein lysates were subjected to SDS PAGE followed by western blot with S100A6 antibody (PHC20601) at 1 μ g/ml.

Lane 1: Recombinant protein

Second Ab: Goat Anti-Rabbit IgG H&L Polyclonal antibody, HRP (PTB96431) at 0.1 μ g/mL.

Predict MW: 12 kDa

Observed MW: 12 kDa