

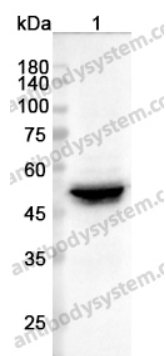
# Anti-KRT8/CK-8 Polyclonal Antibody

## Summary

---

|                              |                                                                                                                                                                           |
|------------------------------|---------------------------------------------------------------------------------------------------------------------------------------------------------------------------|
| <b>Catalog No.</b>           | PHC17901                                                                                                                                                                  |
| <b>Host species</b>          | Rabbit                                                                                                                                                                    |
| <b>Tested applications</b>   | ELISA: 1:4000-1:8000, IHC: 1:50-1:100, WB: 1:1000-1:4000                                                                                                                  |
| <b>Species reactivity</b>    | Human, Mouse, Rat                                                                                                                                                         |
| <b>Immunogen</b>             | E. coli - derived recombinant Human KRT8/CK-8 (Gln90-Gln236).                                                                                                             |
| <b>Form</b>                  | Liquid                                                                                                                                                                    |
| <b>Storage buffer</b>        | 0.01M PBS, pH 7.4, 50% Glycerol, 0.05% Proclin 300.                                                                                                                       |
| <b>Concentration</b>         | 0.4 mg/ml                                                                                                                                                                 |
| <b>Clonality</b>             | Polyclonal                                                                                                                                                                |
| <b>Isotype</b>               | IgG                                                                                                                                                                       |
| <b>Applications</b>          | ELISA, IHC, WB                                                                                                                                                            |
| <b>Target</b>                | Type-II keratin Kb8,CYK8,Keratin-8,KRT8,Keratin,type II cytoskeletal 8,Cytokeratin-8,CK-8,K8                                                                              |
| <b>Purification</b>          | Purified by antigen affinity column.                                                                                                                                      |
| <b>Accession</b>             | P05787                                                                                                                                                                    |
| <b>Stability and Storage</b> | Use a manual defrost freezer and avoid repeated freeze thaw cycles. Store at 2 to 8°C for frequent use. Store at -20 to -80°C for twelve months from the date of receipt. |
| <b>Note</b>                  | For research use only.                                                                                                                                                    |

## Data Image



Western blot

Various lysates were subjected to SDS PAGE followed by western blot with KRT8 / CK-8 antibody (PHC17901) at 0.4 µg/ml.

Lane 1: A549 cell lysate

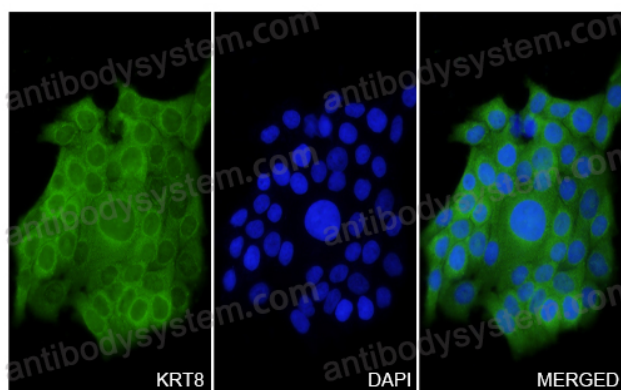
Second Ab: Goat Anti-Rabbit IgG H&L Polyclonal antibody, HRP (PTB96431) at 0.1 µg/mL.

Predict MW: 53 kDa

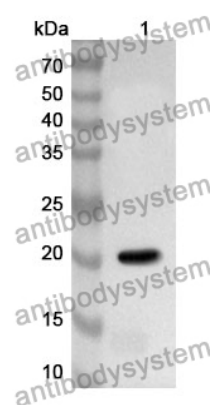
Observed MW: 53 kDa

KRT8 / CK-8 in HaCat Cell Line.

The HaCat cells were fixed with 4% paraformaldehyde (20 min), and then blocked with 5% goat serum for 1h. And the cells were incubated for 2h at 37°C with KRT8 / CK-8 (PHC17901) at 8 µg/ml. The section was then incubated with Goat Anti-Rabbit IgG (Alexa Fluor-488) preabsorbed at 1/100 dilution (Shown in green) for 1 hour at room temperature. Nuclear DNA was labelled with DAPI (shown in blue).



Immunocytochemistry/ Immunofluorescence



Western Blot

Recombinant Protein lysates were subjected to SDS PAGE followed by western blot with KRT8/CK-8 antibody (PHC17901) at 1  $\mu$ g/ml.

Lane 1: Recombinant Protein

Second Ab: Goat Anti-Rabbit IgG H&L Polyclonal antibody, HRP (PTB96431) at 0.1  $\mu$ g/mL.

Predict MW: 20 kDa

Observed MW: 20 kDa