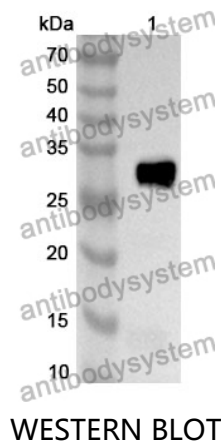


Anti-CD61/ITGB3 Polyclonal Antibody

Summary

Catalog No.	PHC13001
Host species	Rabbit
Tested applications	ELISA: 1:4000-1:8000, IHC: 1:50-1:100, WB: 1:1000-1:4000
Species reactivity	Human, Mouse, Rat
Immunogen	E. coli - derived recombinant Human CD61/ITGB3 (Glu134-Glu384).
Form	Liquid
Storage buffer	0.01M PBS, pH 7.4, 50% Glycerol, 0.05% Proclin 300.
Clonality	Polyclonal
Isotype	IgG
Applications	ELISA, IHC, WB
Target	GPIIIa, Integrin beta-3, CD61, ITGB3, Platelet membrane glycoprotein IIIa, GP3A
Purification	Purified by antigen affinity column.
Accession	P05106
Stability and Storage	Use a manual defrost freezer and avoid repeated freeze thaw cycles. Store at 2 to 8°C for frequent use. Store at -20 to -80°C for twelve months from the date of receipt.
Note	For research use only.

Data Image



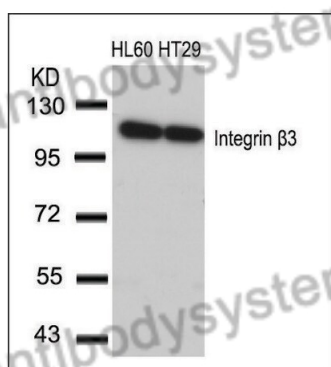
Recombinant Protein lysates were subjected to SDS PAGE followed by western blot with CD61/ITGB3 antibody (PHC13001) at 1 µg/ml.

Lane 1: Recombinant protein

Second Ab: Goat Anti-Rabbit IgG H&L Polyclonal antibody, HRP (PTB96431) at 0.1 µg/mL.

Predict MW: 30 kDa

Observed MW: 30 kDa



Various lysates were subjected to SDS PAGE followed by western blot with ITGB3 antibody (PHC13001) at 1 µg/ml.

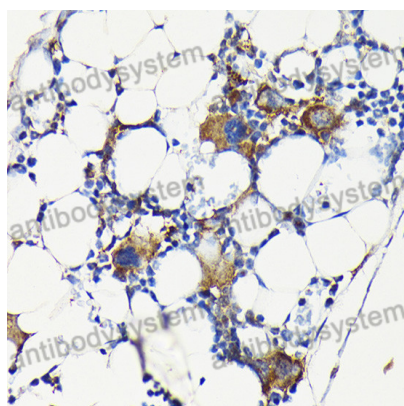
Lane 1: HL60

Lane 2: HT29

Second Ab: Goat Anti-Rabbit IgG H&L Polyclonal antibody, HRP (PTB96431) at 0.1 µg/mL.

Predict MW: 87 kDa

Observed MW: 110 kDa



Immunohistochemical

Immunohistochemical analysis of mouse bone marrow stained for ITGB3 with PHC13001.