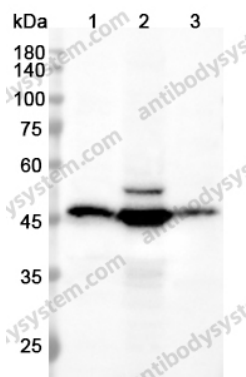


Anti-CYP17A1 Polyclonal Antibody

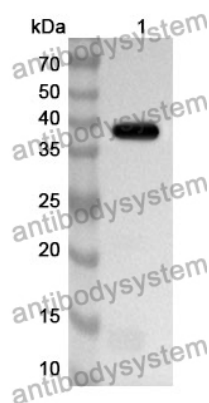
Summary

Catalog No.	PHC12901
Host species	Rabbit
Tested applications	ELISA: 1:4000-1:8000, IHC: 1:50-1:100, WB: 1:1000-1:4000
Species reactivity	Human
Immunogen	E. coli - derived recombinant Human CYP17A1 (Cys183-Thr508).
Form	Liquid
Storage buffer	0.01M PBS, pH 7.4, 50% Glycerol, 0.05% Proclin 300.
Clonality	Polyclonal
Isotype	IgG
Applications	ELISA, IHC, WB
Target	Steroid 17-alpha-hydroxylase/17,20 lyase,CYPXVII,Cytochrome P450 17A1,Cytochrome P450-C17,Steroid 17-alpha-monooxygenase,17-alpha-hydroxyprogesterone aldolase,CYP17A1,S17AH,Cytochrome P450c17,CYP17
Purification	Purified by antigen affinity column.
Accession	P05093
Stability and Storage	Use a manual defrost freezer and avoid repeated freeze thaw cycles. Store at 2 to 8°C for frequent use. Store at -20 to -80°C for twelve months from the date of receipt.
Note	For research use only.

Data Image



Western blot



Western Blot

Various lysates were subjected to SDS PAGE followed by western blot with CYP17A1 antibody (PHC12901) at 0.69ug/ml.

Lane 1: HeLa cell lysate

Lane 2: K562 cell lysate

Lane 3: A549 cell lysate

Second Ab: Goat Anti-Rabbit IgG H&L Polyclonal antibody, HRP (PTB96431) at 0.1 µg/mL.

Predict MW: 46,53 kDa

Observed MW: 46,53 kDa

Recombinant Protein lysates were subjected to SDS PAGE followed by western blot with CYP17A1 antibody (PHC12901) at 1 µg/ml.

Lane 1: Recombinant Protein

Second Ab: Goat Anti-Rabbit IgG H&L Polyclonal antibody, HRP (PTB96431) at 0.1 µg/mL.

Predict MW: 39 kDa

Observed MW: 39 kDa