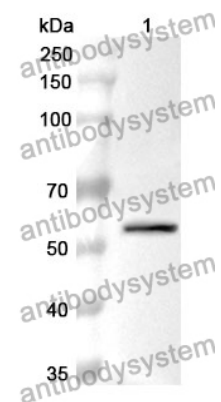


Anti-CAPNS1 Polyclonal Antibody

Summary

Catalog No.	PHC09901
Host species	Rabbit
Tested applications	ELISA: 1:4000-1:8000, IHC: 1:50-1:100, WB: 1:1000-1:4000
Species reactivity	Human, Mouse, Rat
Immunogen	E. coli - derived recombinant Human CAPNS1 (Met1-Ser268).
Form	Liquid
Storage buffer	0.01M PBS, pH 7.4, 50% Glycerol, 0.05% Proclin 300.
Clonality	Polyclonal
Isotype	IgG
Applications	ELISA, IHC, WB
Target	CAPN4,CAPNS1,Calpain regulatory subunit,Calcium-dependent protease small subunit 1,Calcium-dependent protease small subunit,Calcium-activated neutral proteinase small subunit,CDPS,CSS1,Calpain small subunit 1,CANP small subunit,CAPNS
Purification	Purified by antigen affinity column.
Accession	P04632
Stability and Storage	Use a manual defrost freezer and avoid repeated freeze thaw cycles. Store at 2 to 8°C for frequent use. Store at -20 to -80°C for twelve months from the date of receipt.
Note	For research use only.

Data Image



WESTERN BLOT

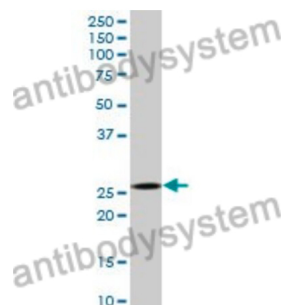
Recombinant Protein lysates were subjected to SDS PAGE followed by western blot with CAPNS1 antibody (PHC09901) at 1 µg/ml.

Lane 1: Recombinant protein

Second Ab: Goat Anti-Rabbit IgG H&L Polyclonal antibody, HRP (PTB96431) at 0.1 µg/mL.

Predict MW: 55 kDa

Observed MW: 55 kDa



Western Blot

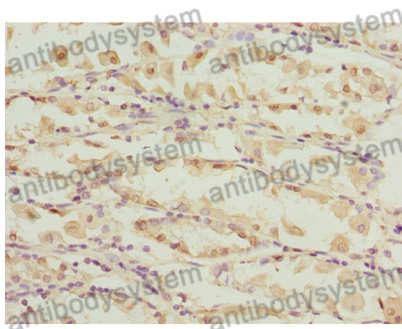
Various lysates were subjected to SDS PAGE followed by western blot with CAPNS1 antibody (PHC09901) at 1 µg/ml.

Lane 1: Human pancreas

Second Ab: Goat Anti-Rabbit IgG H&L Polyclonal antibody, HRP (PTB96431) at 0.1 µg/mL.

Predict MW: 28 kDa

Observed MW: 28 kDa



Immunohistochemical

Immunohistochemical analysis of human gastric cancer tissue stained for CAPNS1 with PHC09901.