

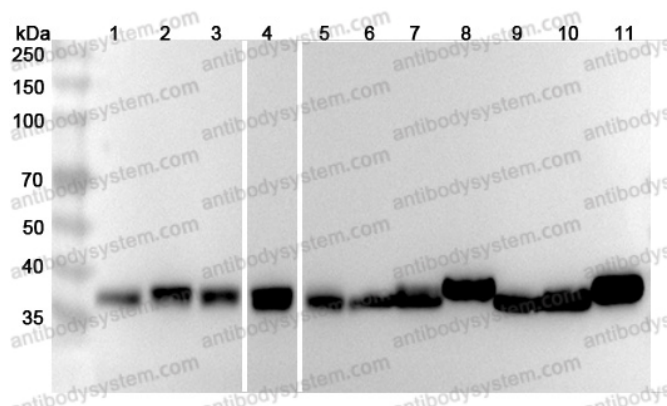
Anti-ALDOA Polyclonal Antibody

Summary

Catalog No.	PHC06001
Host species	Rabbit
Tested applications	ELISA: 1:4000-1:8000, IHC: 1:50-1:100, WB: 1:1000-1:4000
Species reactivity	Human, Mouse, Rat
Immunogen	E. coli - derived recombinant Human ALDOA (Asp18-Gly273).
Form	Liquid
Storage buffer	0.01M PBS, pH 7.4, 50% Glycerol, 0.05% Proclin 300.
Clonality	Polyclonal
Isotype	IgG
Applications	ELISA, IHC, WB
Target	Fructose-bisphosphate aldolase A,ALDA,Muscle-type aldolase,Lung cancer antigen NY-LU-1,ALDOA
Purification	Purified by antigen affinity column.
Accession	P04075
Stability and Storage	Use a manual defrost freezer and avoid repeated freeze thaw cycles. Store at 2 to 8°C for frequent use. Store at -20 to -80°C for twelve months from the date of receipt.
Note	For research use only.

Data Image

Various lysates were subjected to SDS PAGE followed by western blot with ALDOA antibody (PHC06001) at 1µg/ml.



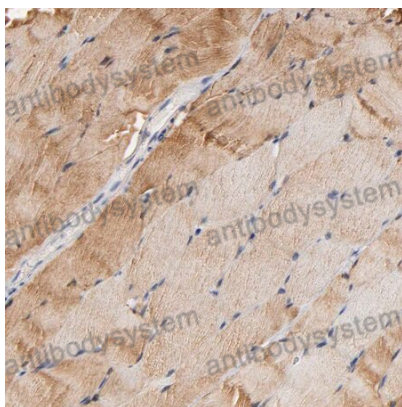
Western Blot

Lane 1: HeLa cell lysate
Lane 2: A549 cell lysate
Lane 3: HepG2 cell lysate
Lane 4: MCF7 cell lysate
Lane 5: 293T cell lysate
Lane 6: Mouse liver lysate
Lane 7: Mouse kidney lysate
Lane 8: Mouse brain lysate
Lane 9: Rat liver lysate
Lane 10: Rat kidney lysate
Lane 11: Rat brain lysate

Second Ab: Goat Anti-Rabbit IgG H&L Polyclonal antibody, HRP (PTB96431) at 0.1 µg/mL.

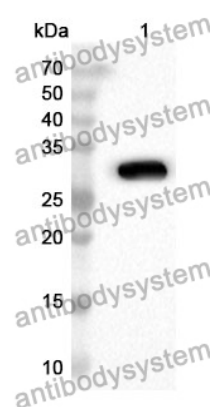
Predict MW: 39 kDa

Observed MW: 39 kDa



Immunohistochemical

Immunohistochemical analysis of human skeletal muscle stained for ALDOA with PHC06001.



Western Blot

Recombinant Protein lysates were subjected to SDS PAGE followed by western blot with ALDOA antibody (PHC06001) at 1 μ g/ml.

Lane 1: Recombinant Protein

Second Ab: Goat Anti-Rabbit IgG H&L Polyclonal antibody, HRP (PTB96431) at 0.1 μ g/mL.

Predict MW: 30 kDa

Observed MW: 30 kDa