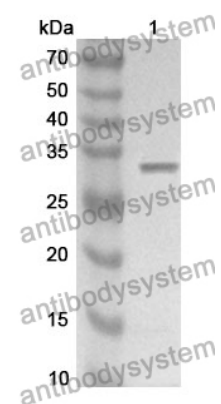


Anti-ESR1/ER-alpha Polyclonal Antibody

Summary

Catalog No.	PHC03201
Host species	Rabbit
Tested applications	ELISA: 1:4000-1:8000, IHC: 1:50-1:200, IF: 1:50-1:200, WB: 1:500-1:4000
Species reactivity	Human, Mouse, Rat
Immunogen	E. coli - derived recombinant Human ESR1/ER-alpha (Met297-Ser554).
Form	Liquid
Storage buffer	0.01M PBS, pH 7.4, 50% Glycerol, 0.05% Proclin 300.
Concentration	0.86 mg/ml
Clonality	Polyclonal
Isotype	IgG
Applications	ELISA, IHC, IF, WB
Target	Estrogen receptor, ER-alpha, ESR, ER, ESR1, Nuclear receptor subfamily 3 group A member 1, NR3A1, Estradiol receptor
Purification	Purified by antigen affinity column.
Accession	P03372
Stability and Storage	Use a manual defrost freezer and avoid repeated freeze thaw cycles. Store at 2 to 8°C for frequent use. Store at -20 to -80°C for twelve months from the date of receipt.
Note	For research use only.

Data Image



WESTERN BLOT

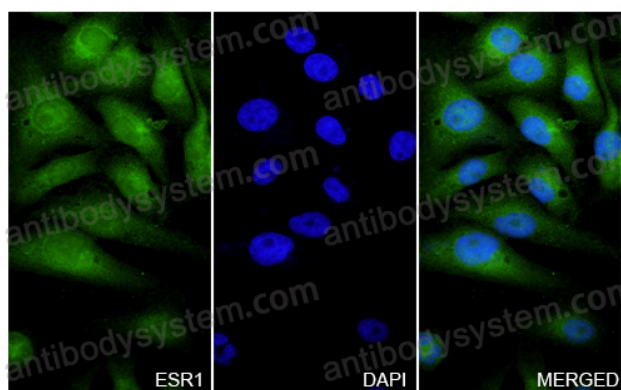
Recombinant Protein lysates were subjected to SDS PAGE followed by western blot with ESR1/ER-alpha antibody (PHC03201) at 1 µg/ml.

Lane 1: Recombinant protein

Second Ab: Goat Anti-Rabbit IgG H&L Polyclonal antibody, HRP (PTB96431) at 0.1 µg/mL.

Predict MW: 32 kDa

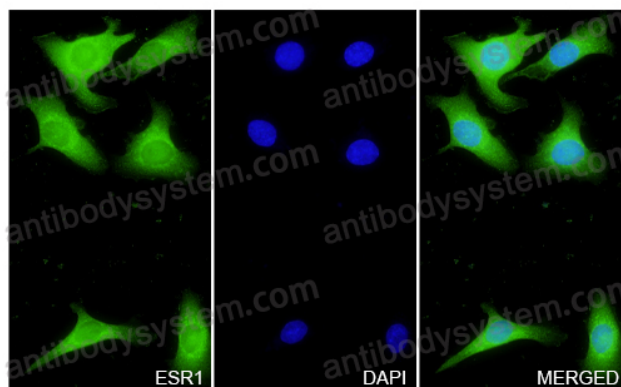
Observed MW: 32 kDa



Immunocytochemistry/ Immunofluorescence

ESR1 / ER-alpha in MDA-MB-231 Cell Line.

The MDA-MB-231 cells were fixed with 4% paraformaldehyde (20 min), and then blocked with 5% goat serum for 1h. And the cells were incubated for 2h at 37°C with ESR1 / ER-alpha (PHC03201) at 17.2 µg/ml. The section was then incubated with Goat Anti-Rabbit IgG (Alexa Fluor-488) preabsorbed at 1/100 dilution (Shown in green) for 1 hour at room temperature. Nuclear DNA was labelled with DAPI (shown in blue).



Immunocytochemistry/ Immunofluorescence

ESR1 / ER-alpha in SKOV3 Cell Line.

The SKOV3 cells were fixed with 4% paraformaldehyde (20 min), and then blocked with 5% goat serum for 1h. And the cells were incubated for 2h at 37°C with ESR1 / ER-alpha (PHC03201) at 17.2 µg/ml. The section was then incubated with Goat Anti-Rabbit IgG (Alexa Fluor-488) preabsorbed at 1/100 dilution (Shown in green) for 1 hour at room temperature. Nuclear DNA was labelled with DAPI (shown in blue).