

Anti-Human LRRC15/LIB Antibody (SAA0773)

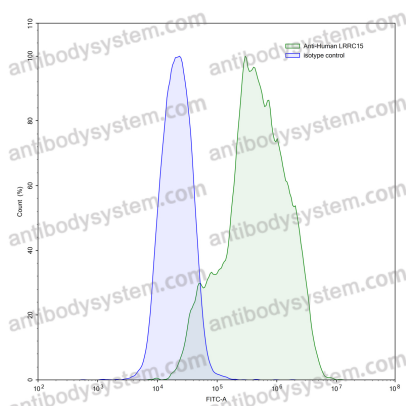
Summary

Catalog No.	FHJ28810
Clone ID	SAA0773
Host species	Mouse
Conjugation	Unconjugated
Species reactivity	Human
Form	Liquid
Storage buffer	0.01M PBS, pH 7.4.
Concentration	1.66 mg/ml
Purity	>95% as determined by SDS-PAGE.
Clonality	Monoclonal
Isotype	IgG2a, kappa
Applications	ELISA, FCM
Target	Leucine-rich repeat protein induced by beta-amyloid homolog, LRRC15, Leucine-rich repeat-containing protein 15, LIB, hLib
Purification	Protein A/G purified from cell culture supernatant.
Endotoxin level	Please contact with the lab for this information.
Accession	Q8TF66
Stability and Storage	Use a manual defrost freezer and avoid repeated freeze-thaw cycles. Store at 4°C short term (1-2 weeks). Store at -20°C 12 months. Store at - 80°C long term.

Note

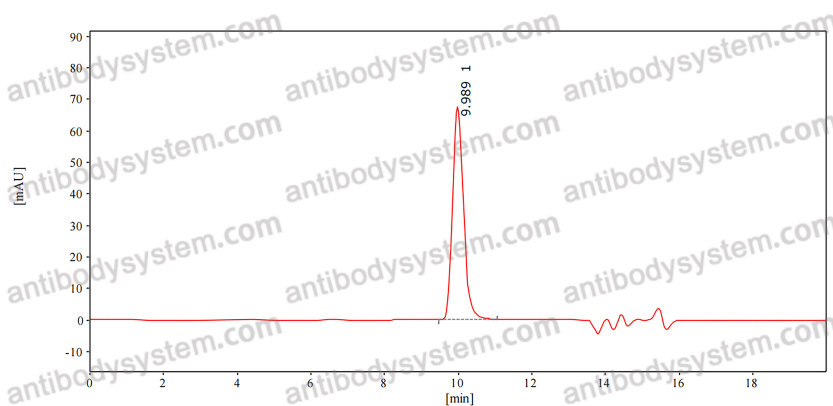
For research use only.

Data Image



Flow-cytometry

Flow-cytometry using anti-human LRRC15 antibody. LRRC15 Transfected CHO cells were stained with an irrelevant antibody (Blue Histogram) or an anti-human LRRC15 antibody monoclonal antibody (Catalog # FHJ28810, Green Histogram) at a concentration of 5 $\mu\text{g/ml}$ for 30 mins at RT. After washing, bound antibody was detected using a FITC conjugated goat anti-mouse antibody (Catalog # PMB96441) and cells analysed on a NovoCyt Flow Cytometer.



SEC-HPLC

The purity of this product is >95% as determined by SEC-HPLC.