

# Anti-Human/Mouse CD206/MRC1 Antibody (SAA0769)

## Summary

---

<b>Catalog No.</b>	FHD55210
<b>Clone ID</b>	SAA0769
<b>Host species</b>	Human
<b>Conjugation</b>	Unconjugated
<b>Species reactivity</b>	Human, Mouse
<b>Form</b>	Liquid
<b>Storage buffer</b>	0.01M PBS, pH 7.4, 0.09% Sodium azide.
<b>Concentration</b>	1 mg/ml
<b>Purity</b>	>95% as determined by SDS-PAGE.
<b>Clonality</b>	Monoclonal
<b>Isotype</b>	VHH-hFc
<b>Applications</b>	ELISA, FCM
<b>Target</b>	Human mannose receptor, MRC1, MMR, Macrophage mannose receptor 1, CD206, hMR, C-type lectin domain family 13 member D-like, CLEC13DL, MRC1L1, CLEC13D, C-type lectin domain family 13 member D, Macrophage mannose receptor 1-like protein 1
<b>Purification</b>	Protein A/G purified from cell culture supernatant.
<b>Endotoxin level</b>	Please contact with the lab for this information.
<b>Accession</b>	P22897

## Recombinant Proteins & Antibodies

### Stability and Storage

Use a manual defrost freezer and avoid repeated freeze-thaw cycles.

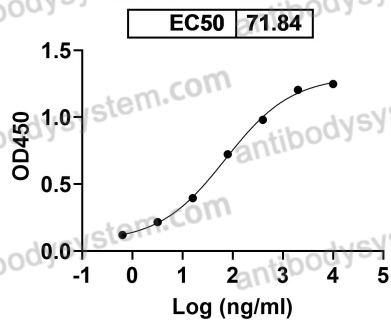
Store at 4°C short term (1-2 weeks). Store at -20°C 12 months. Store at -80°C long term.

### Note

For research use only.

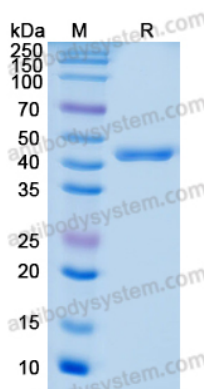
## Data Image

Anti-Human/Mouse CD206/MRC1 Antibody (SAA0769)  
binds with Human CD206



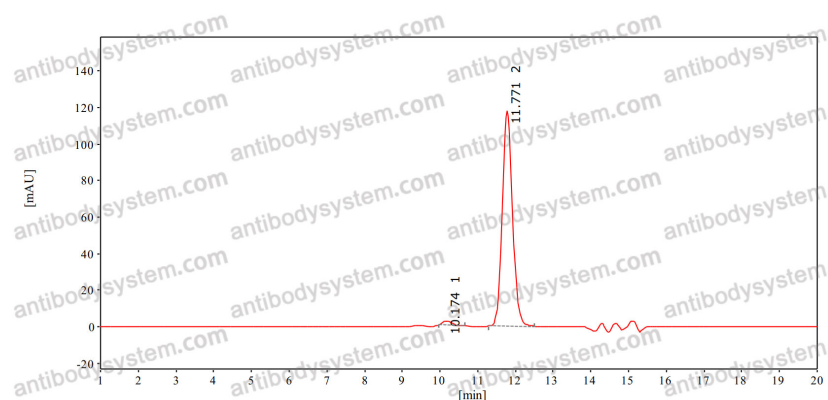
Bioactivity

Detects CD206/MRC1 in indirect ELISAs.



SDS-PAGE

SDS PAGE for CD206/MRC1 Antibody



SEC-HPLC

The purity of this product is >95% as determined by SEC-HPLC.