

# Anti-Human UQCRC1/Core protein I Polyclonal Antibody

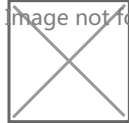
## Summary

---

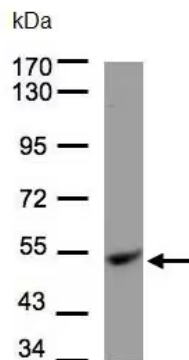
<b>Catalog No.</b>	PHD96801
<b>Host species</b>	Rabbit
<b>Tested applications</b>	ELISA: 1:4000-1:8000, IHC: 1:50-1:100, WB: 1:1000-1:4000
<b>Species reactivity</b>	Human
<b>Immunogen</b>	E. coli - derived recombinant Human UQCRC1/Core protein I (Thr35-Phe480).
<b>Form</b>	Liquid
<b>Storage buffer</b>	0.01M PBS, pH 7.4, 50% Glycerol, 0.05% Proclin 300.
<b>Clonality</b>	Polyclonal
<b>Isotype</b>	IgG
<b>Applications</b>	ELISA, WB
<b>Target</b>	UQCRC1, Cytochrome b-c1 complex subunit 1, mitochondrial, Ubiquinol-cytochrome-c reductase complex core protein 1, Core protein I, Complex III subunit 1
<b>Purification</b>	Purified by antigen affinity column.
<b>Stability and Storage</b>	Use a manual defrost freezer and avoid repeated freeze thaw cycles. Store at 2 to 8°C for frequent use. Store at -20 to -80°C for twelve months from the date of receipt.
<b>Note</b>	For research use only.

## Data Image

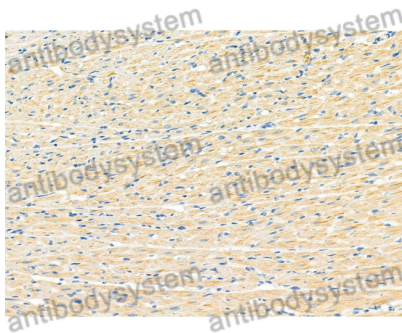
Image not found or type unknown



WESTERN BLOT



Western Blot



Immunohistochemical

Recombinant Protein lysates were subjected to SDS PAGE followed by western blot with UQCRC1/Core protein I antibody (PHD96801) at 1 µg/ml.

Lane 1: Recombinant protein

Second Ab: Goat Anti-Rabbit IgG H&L Polyclonal antibody, HRP (PTB96431) at 0.1 µg/mL.

Predict MW: 51 kDa

Observed MW: 51 kDa

Various lysates were subjected to SDS PAGE followed by western blot with UQCRC1 antibody (PHD96801) at 1 µg/ml.

Lane 1: HepG2

Second Ab: Goat Anti-Rabbit IgG H&L Polyclonal antibody, HRP (PTB96431) at 0.1 µg/mL.

Predict MW: 53 kDa

Observed MW: 53 kDa

Immunohistochemical analysis of rat heart stained for UQCRC1 with PHD96801.