

# Anti-ORM1/a1AGP Polyclonal Antibody

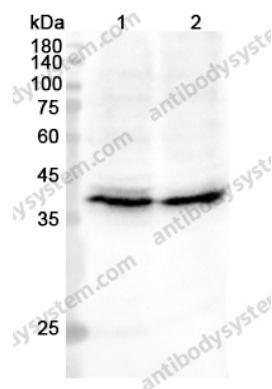
## Summary

---

<b>Catalog No.</b>	PHC01101
<b>Host species</b>	Rabbit
<b>Tested applications</b>	ELISA: 1:4000-1:8000, IHC: 1:50-1:100, WB: 1:1000-1:4000
<b>Species reactivity</b>	Human
<b>Immunogen</b>	E. coli - derived recombinant Human ORM1/a1AGP (Gln19-Ser201).
<b>Form</b>	Liquid
<b>Storage buffer</b>	0.01M PBS, pH 7.4, 50% Glycerol, 0.05% Proclin 300.
<b>Clonality</b>	Polyclonal
<b>Isotype</b>	IgG
<b>Applications</b>	ELISA, IHC, WB
<b>Target</b>	ORM1,Orosomucoid-1,AGP1,OMD 1,AGP 1,Alpha-1-acid glycoprotein 1
<b>Purification</b>	Purified by antigen affinity column.
<b>Accession</b>	P02763
<b>Stability and Storage</b>	Use a manual defrost freezer and avoid repeated freeze thaw cycles. Store at 2 to 8°C for frequent use. Store at -20 to -80°C for twelve months from the date of receipt.
<b>Note</b>	For research use only.

## Data Image

---



Western blot



Western Blot

Various lysates were subjected to SDS PAGE followed by western blot with ORM1 / a1AGP antibody (PHC01101) at 1.6µg/ml.

Lane 1: HepG2 cell lysate

Lane 2: MDA-MB-231 cell lysate

Second Ab: Goat Anti-Rabbit IgG H&L Polyclonal antibody, HRP (PTB96431) at 0.1 µg/mL.

Predict MW: 23 kDa

Observed MW: 40 kDa

Recombinant Protein lysates were subjected to SDS PAGE followed by western blot with ORM1/a1AGP antibody (PHC01101) at 1 µg/ml.

Lane 1: Recombinant Protein

Second Ab: Goat Anti-Rabbit IgG H&L Polyclonal antibody, HRP (PTB96431) at 0.1 µg/mL.

Predict MW: 24 kDa

Observed MW: 24 kDa