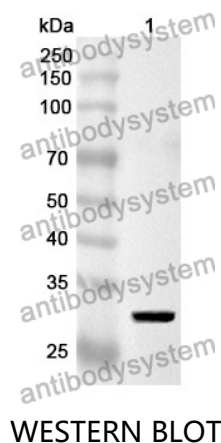


Anti-HLA-DRB1 Polyclonal Antibody

Summary

| | |
|------------------------------|---|
| Catalog No. | PHB96801 |
| Host species | Rabbit |
| Tested applications | ELISA: 1:4000-1:8000, IHC: 1:50-1:100, WB: 1:1000-1:4000 |
| Species reactivity | Human |
| Immunogen | E. coli - derived recombinant Human HLA-DRB1 (Gly30-Ser266). |
| Form | Liquid |
| Storage buffer | 0.01M PBS, pH 7.4, 50% Glycerol, 0.05% Proclin 300. |
| Clonality | Polyclonal |
| Isotype | IgG |
| Applications | ELISA, IHC, WB |
| Target | HLA class II histocompatibility antigen,DRB1 beta chain,Human leukocyte antigen DRB1,HLA-DRB1 |
| Purification | Purified by antigen affinity column. |
| Accession | P01911 |
| Stability and Storage | Use a manual defrost freezer and avoid repeated freeze thaw cycles. Store at 2 to 8°C for frequent use. Store at -20 to -80°C for twelve months from the date of receipt. |
| Note | For research use only. |

Data Image



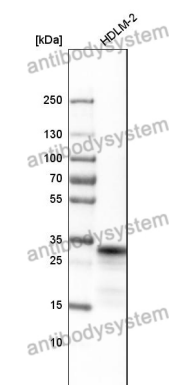
Recombinant Protein lysates were subjected to SDS PAGE followed by western blot with HLA-DRB1 antibody (PHB96801) at 1 µg/ml.

Lane 1: Recombinant protein

Second Ab: Goat Anti-Rabbit IgG H&L Polyclonal antibody, HRP (PTB96431) at 0.1 µg/mL.

Predict MW: 29 kDa

Observed MW: 29 kDa



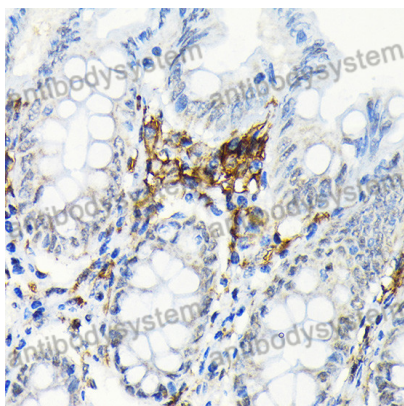
Various lysates were subjected to SDS PAGE followed by western blot with HLA-DRB1 antibody (PHB96801) at 1 µg/ml.

Lane 1: HDLM-2

Second Ab: Goat Anti-Rabbit IgG H&L Polyclonal antibody, HRP (PTB96431) at 0.1 µg/mL.

Predict MW: 30 kDa

Observed MW: 30 kDa



Immunohistochemical

Immunohistochemical analysis of human colon stained for HLA-DRB1 with PHB96801.