

# Anti-PIGR Polyclonal Antibody

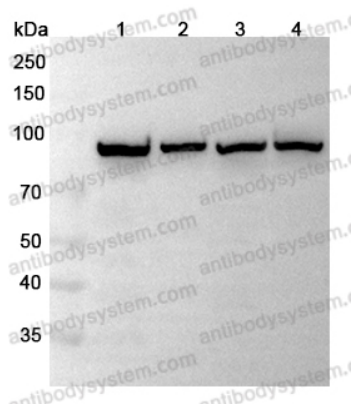
## Summary

---

<b>Catalog No.</b>	PHB96101
<b>Host species</b>	Rabbit
<b>Tested applications</b>	ELISA: 1:4000-1:8000, IHC: 1:50-1:100, WB: 1:1000-1:4000
<b>Species reactivity</b>	Human
<b>Immunogen</b>	E. coli - derived recombinant Human PIGR (Arg289-Arg638).
<b>Form</b>	Liquid
<b>Storage buffer</b>	0.01M PBS, pH 7.4, 50% Glycerol, 0.05% Proclin 300.
<b>Clonality</b>	Polyclonal
<b>Isotype</b>	IgG
<b>Applications</b>	ELISA, IHC, WB
<b>Target</b>	Poly-Ig receptor, Polymeric immunoglobulin receptor, PIgR, PIGR, Hepatocellular carcinoma-associated protein TB6
<b>Purification</b>	Purified by antigen affinity column.
<b>Accession</b>	P01833
<b>Stability and Storage</b>	Use a manual defrost freezer and avoid repeated freeze thaw cycles. Store at 2 to 8°C for frequent use. Store at -20 to -80°C for twelve months from the date of receipt.
<b>Note</b>	For research use only.

## Data Image

---



Western Blot

Various lysates were subjected to SDS PAGE followed by western blot with PIGR antibody (PHB96101) at 1 $\mu$ g/ml.

Lane 1: K562 cell lysate

Lane 2: HL60 cell lysate

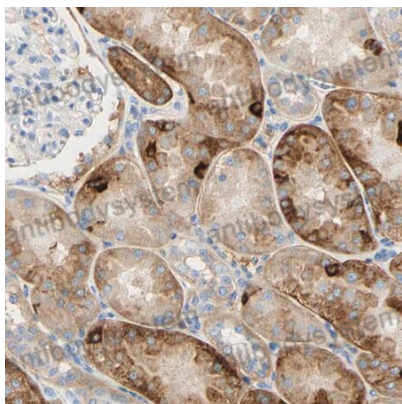
Lane 3: HepG2 cell lysate

Lane 4: MOLT-4 cell lysate

Second Ab: Goat Anti-Rabbit IgG H&L Polyclonal antibody, HRP (PTB96431) at 0.1  $\mu$ g/mL.

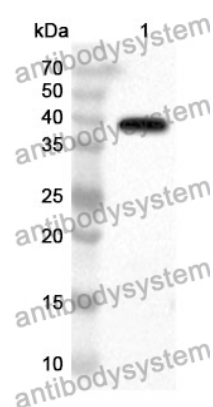
Predict MW: 83 kDa

Observed MW: 83 kDa



Immunohistochemical

Immunohistochemical analysis of human kidney stained for PIGR with PHB96101.



Western Blot

Recombinant Protein lysates were subjected to SDS PAGE followed by western blot with PIGR antibody (PHB96101) at 1  $\mu$ g/ml.

Lane 1: Recombinant Protein

Second Ab: Goat Anti-Rabbit IgG H&L Polyclonal antibody, HRP (PTB96431) at 0.1  $\mu$ g/mL.

Predict MW: 41 kDa

Observed MW: 41 kDa