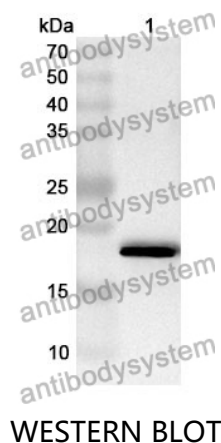


Anti-IL1B/IL1F2 Polyclonal Antibody

Summary

Catalog No.	PHB95601
Host species	Rabbit
Tested applications	ELISA: 1:4000-1:8000, IHC: 1:50-1:200, IF:1:50-1:200, WB: 1:1000-1:4000
Species reactivity	Human, Mouse, Rat
Immunogen	E. coli - derived recombinant Human IL1B/IL1F2 (Ala117-Ser269).
Form	Liquid
Storage buffer	0.01M PBS, pH 7.4, 50% Glycerol, 0.05% Proclin 300.
Concentration	0.48 mg/ml
Clonality	Polyclonal
Isotype	IgG
Applications	ELISA, IHC, IF, WB
Target	Interleukin-1 beta,IL1B,Catabolin,IL1F2,IL-1 beta,IL-1 β
Purification	Purified by antigen affinity column.
Accession	P01584
Stability and Storage	Use a manual defrost freezer and avoid repeated freeze thaw cycles. Store at 2 to 8°C for frequent use. Store at -20 to -80°C for twelve months from the date of receipt.
Note	For research use only.

Data Image



Recombinant Protein lysates were subjected to SDS PAGE followed by western blot with IL1B/IL1F2 antibody (PHB95601) at 1 µg/ml.

Lane 1: Recombinant protein

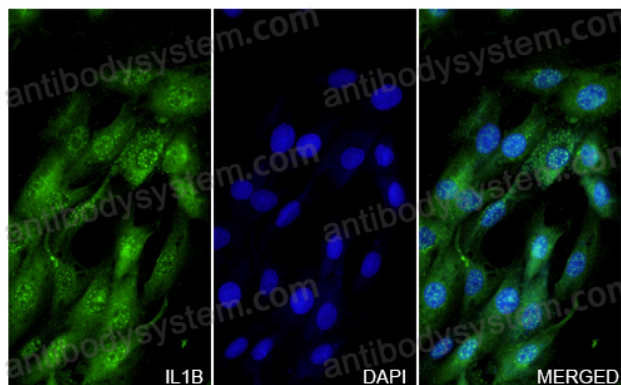
Second Ab: Goat Anti-Rabbit IgG H&L Polyclonal antibody, HRP (PTB96431) at 0.1 µg/mL.

Predict MW: 18 kDa

Observed MW: 18 kDa

IL1B / IL1F2 in H929 Cell Line.

The H929 cells were fixed with 4% paraformaldehyde (20 min), and then blocked with 5% goat serum for 1h. And the cells were incubated for 2h at 37°C with IL1B / IL1F2 (PHB95601) at 9.6 µg/ml. The section was then incubated with Goat Anti-Rabbit IgG (Alexa Fluor-488) preabsorbed at 1/100 dilution (Shown in green) for 1 hour at room temperature. Nuclear DNA was labelled with DAPI (shown in blue).



Immunocytochemistry/ Immunofluorescence