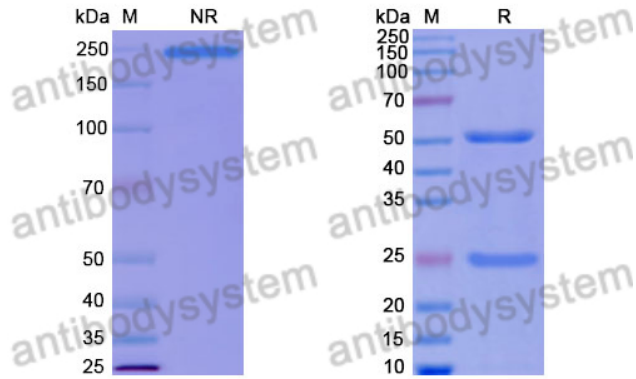


Human IgG1 (P329G/E356D/M358L), kappa Isotype Control Antibody (HyHEL-10)

Summary

| | |
|------------------------------|---|
| Catalog No. | RHJ92826 |
| Clone ID | HyHEL-10 |
| Host species | Human |
| Form | Liquid |
| Storage buffer | 0.01M PBS, pH 7.4. |
| Concentration | 1 mg/ml |
| Purity | >95% as determined by SDS-PAGE. |
| Clonality | Monoclonal |
| Isotype | IgG1 (P329G/E356D/M358L), kappa |
| Applications | FCM, Isotype Control, In vivo Control |
| Target | Human IgG1 (P329G/E356D/M358L),kappa |
| Purification | Protein A/G purified from cell culture supernatant. |
| Endotoxin level | Please contact with the lab for this information. |
| Stability and Storage | Use a manual defrost freezer and avoid repeated freeze-thaw cycles. Store at 4°C short term (1-2 weeks). Store at -20°C 12 months. Store at -80°C long term. |
| Note | For research use only. |

Data Image



SDS PAGE for Human IgG1 (P329G/E356D/M358L),
kappa Isotype Control Antibody (HyHEL-10)

SDS-PAGE